

The Parishes of Barton Bendish & Eastmoor; Beachamwell, Shingham & Drymere;
Boughton; Wereham

December 2012 & January 2013

WELCOME



Well, here we are nearly at the end of another year - can you believe how time flies?

We would like to thank everyone who has helped with G4N in any way - we do appreciate your continued support.

Mark Powell has very kindly sent the following message *'Well done and thank you, Eileen, Lynda and Pam, for the tremendous work you do in ensuring that G4N gets to every household and beyond each month. A really magnificent effort'*.

Well, all that is left for us to say is.....



"A very Merry Christmas and a Happy New Year to everyone"

As always, 'Happy Reading
The Editorial Team
Eileen and Pam

Thanks to all contributors and apologies to any whose work has not been shown in this issue.

We promise to include your articles wherever and whenever possible. Please do keep them coming.

Many thanks to the distributors, we couldn't do without you!!!

© Copyright Group4 News 2012

GROUP 4 TEAM VILLAGE CONTACTS

Barton Bendish: Jill Mason
Sandmere, Church Rd, Barton Bendish
Tel: 01366 347 928

Masons@sandmere66.fsnet.co.uk

Beachamwell: Eileen Powell
20 All Saints Way, Beachamwell
Tel: 01366 328 648

powells@beechamwell.plus.com

Boughton: Pam Wakeling
Robet, Mill Hill Road, Boughton
Tel: 01366 500 429

p.wakeling621@btinternet.com

Wereham: Viv Scott
Orchard House, Flegg Green, Wereham
Tel: 01366 500346

farthings@tiscali.co.uk

Please submit all information through your Village Contacts.

Deadline for copy: 11th of each month

ADVERTISING

Lynda Eddy, Tel: 01366 501 308

e:mail: lyndajeddy@hotmail.com

If you use any of the advertisers in the magazine, please mention where you have seen their advertisement.

WEBSITE

www.group4news.co.uk

Kevin Fisher, Tel:01366 502224

FROM THE BISHOP

A Royal Visit...

Dear Friends,

Barbara is taking some much-needed time off just at the moment, so I am stepping into the breach to write the "Vicar's Letter" for you again, which is a delight and a privilege.

December brings the church season of Advent, which as I expect you know means "Coming" in Latin. The word was used by them for a Royal Visit – red carpets and painting the sand pink, and all that sort of thing. So it got used too for the coming of Jesus the King of Kings.

Mostly we do that in terms of his coming as a baby in Bethlehem 2000 years ago. I'm all for keeping the Christ in Christmas, if you see what I mean. We'll do it in church. How could you do it at home, since it's when things take root in our home and family life that they really start to make a difference. Dust down that crib. Maybe put it in the hall or window. How about saying grace at meals over the Christmas period. Something simple like this would be fine:

Good Father God, thank you for all the good things you give us:

For this wonderful world,

For the life and love of Jesus;

For family, friends and fun.

Bless our meal today

And help us help those who need food now,

For Jesus' sake. Amen.

There are three more Comings, though, that we remember as well. St John's Gospel tells us that Jesus as God's Word was there at the first coming of creation. That's why our Grace said thankyou for the world we live in. Jesus

comes to be with us now when we meet in his name, which is why we say thank you for family and friends round the table, just like we do at Communion. Jesus will come on God's Great Day to make all things right and new, which is why we pray for those who are in need now, so that we can get started on that work now.

Now – where's that carpet ...

+ David



BENEFICE NEWS

Church Services Christmas 2012

DATE	TIME	LOCATION	SERVICE
24th December	04.00 pm	Boughton	Crib Service
	11.00 pm	Marham	Holy Communion
	11.30 pm	Fincham	Holy Communion
	11.30 pm	Wereham	Holy Communion
25th December	09.30am	Shouldham Thorpe	Holy Communion
	11.00am	Beachamwell	Holy Communion

Country Fayre 2013 — Fundraising Unwanted Christmas Gifts

On the 4th May 2013 the parishes of Barton Bendish, Beachamwell, Boughton, Fincham, Marham, Shouldham, Shouldham Thorpe and Wereham, will be holding a Country Fayre at Fincham Memorial Hall and Field. The money raised will go to support parish expenses. At Christmas time people can be given gifts that are never used or they do not want. May we ask that if this happens to you, would you take a moment to think of the Country Fayre and donate the unwanted present as a raffle or tombola prize.

Please contact me on 01366 347487 and we will arrange collection. Alternatively you can drop it into 1 Fuchsia Cottages or 8, West Road, Shouldham Thorpe Norfolk PE33 0DP

Football Scratch Cards

These are sheets which have 40 football teams on, people pay £1 to put their name under a team and when all the squares/teams are full the card is scratched to reveal the winning team. The winner then receives half the money (£20) and the cause keeps half the money (£20). They are pretty much self explanatory when you see them. We aim to do them on the day but would also like to complete some beforehand and therefore are hopeful that some of you would be willing to have some cards to complete over the Christmas period. If you would like some scratchcards I am more than happy to post them to you, so please let me know, or if there is anyone else willing to do it then please let me know.

Sarah Addly 01366 347487

RECIPE PAGE

Peach and Hazelnut Flan



Ingredients

- ◆ 2oz toasted and skinned hazelnuts
- ◆ 8oz sweet short crust pastry (6oz plain flour, 2oz hazelnuts, 2 tbsp icing sugar, pinch of salt, 4oz cold water, 1/4 teasps lemon juice)
- ◆ 1 – 1 1/4 fresh peaches
- ◆ 2 teaspoons cornflour
- ◆ 3 tablespoons Castor Sugar
- ◆ Milk

Method

- ◆ 1. Preheat oven 395 F, 190 C or Gas 5.
- ◆ 2. Grind the toasted and skinned hazelnuts to a uniform fineness.
- ◆ 3. Make pastry case
- ◆ 4. Place peaches in a bowl and pour boiling water over them – leave for 1 minute. Remove, skin and slice.
- ◆ 5. Mix cornflour with 3 tbsps castor sugar.
- ◆ 6. Line an 8” flan tin and use 2/3 of the pastry.
- ◆ 7. Place peaches in the flan case and sprinkle with cornflour and sugar mix.
- ◆ Glaze edge of pastry case with milk.
- ◆ 8. Roll remaining pastry and cover flan. Seal edges, decorate and glaze.
- ◆ 9. Bake for 45 minutes. Serve with warm cream.

Eileen Powell

COUNTRYSIDE NOTES

In winter there can be few places in the world richer in bird life than Norfolk. Although summer visitors such as swallows and warblers have long departed other species in vast numbers decide Norfolk is the place to be when there is hard weather. The quantity of smaller winter visitors to our shores depends a lot on the availability of fruits and berries in northern Europe and Scandinavia and this year appears to have been a bad one for them. An influx of many of our familiar birds often goes unnoticed. More obvious is the amount of redwings and fieldfares which have already arrived and in October hundreds of jays appeared in search of acorns, their favourite autumn food. Beautiful waxwings appear each year in varying numbers; already sightings of those have been recorded. Besides the familiar farmland and woodland birds ducks and geese arrive in their thousands from nesting sites in many other parts of the northern hemisphere. Close to the coast conservation minded farmers leave sugar beet tops on their fields for hungry pink-footed geese which have made the long journey here from Greenland, Iceland or Spitsbergen. They are the most magnificent sight when they flight to and fro from their coastal roosting places at sunrise and sunset or 'whiffle' from side to side as they drop in to land with 'paddles' outstretched. Gaggles of less common Brent geese can be seen fighting over Cley marshes or in Wells harbour. They have winged their way from Arctic Russia or Siberia. On the fields between the road and the sea at Holkham flocks of white-fronted geese from the Arctic are sometimes spotted distinguished from the other species by their barred breast and a white patch around the base of their bills. Often accompanying them are wigeon a colourful duck about the size of a mallard but which, unlike other species of ducks, feed on grass as geese do. They too are likely to have arrived from Russia or Siberia. Huge numbers of waders gather on the mud flats at Snettisham and as high tide approaches thousands of knot, which have nested on the Arctic tundra, swirl around like flocks of starlings. Welney is always worth a visit at this time of the year. The flooded washes and surrounding farmlands are home to thousands of waterfowl, it is much favoured by pochard drakes. Swans too are a spectacular sight with a mix of our own familiar mute swans and families of yellow billed whoopers who have travelled all the way from Russia or other parts of Northern Europe. The similar but smaller bewicks can also often be spotted amongst the others. Grain is put out for them each afternoon then, for a few minutes, it is a frenzied free for all and 'bottoms up'.

COUNTRYSIDE NOTES

There is an incredible abundance of other species of birds inhabiting our county in winter and there are two things that never cease to amaze me. The fact that those who spend their summers in remote wilderness areas seem so little fazed by such close proximity to people and the attention they attract in Norfolk. The other thing is the sheer abundance of natural food there must be available to support all those huge numbers.

PS If you go round the coast don't forget to take your binoculars.

Jill Mason

MORE PONDERISMS

1. Light travels faster than sound. This is why some people appear bright until you hear them speak.
2. A fine is a tax for doing wrong. A tax is a fine for doing well.
3. He, who laughs last, thinks slowest.
4. A day without sunshine is like, well, night.
5. Change is inevitable, except from a vending machine.
6. Those who live by the sword get shot by those who don't.
7. Nothing is foolproof to a sufficiently talented fool.
8. The 50-50-90 rule: Anytime you have a 50-50 chance of getting something right, there's a 90% probability you'll get it wrong.
9. It is said that if you line up all the cars in the world end-to-end, someone from California would be stupid enough to try to pass them.
10. If the shoe fits, get another one just like it.
11. The things that come to those who wait, may be the things left by those, who got there first.
12. Give a man a fish and he will eat for a day. Teach a man to fish and he will sit in a boat all day drinking beer.
13. Flashlight: A case for holding dead batteries.
14. The shin bone is a device for finding furniture in the dark.
15. When you go into court, you are putting yourself in the hands of twelve people, who weren't smart enough to get out of jury duty.

GARDENING TIPS NUMBER 31

December and January are the two darkest months of the year and the weather often decides what we can and what we cannot do. This means that there will be periods when there is very little we can do in the garden. However, winter digging on the vegetable plot needs to be completed as soon as conditions allow. There is no need at this juncture to bother about levelling the ground. Indeed it is better to leave it rough or on clay soils even ridged so that the water can drain and the ground dry off more quickly as the season progresses.

December brings an opportunity to have a good look around the garden shed and greenhouse to see any last minute jobs that may need attention. Early this month is a good time to clean up the shed, greenhouse and cold frame before the really cold weather sets in and to wash up all those pots and trays still dirty from the past season.

Most of the foliage has now fallen from the trees so keep clearing the leaves away to ensure they do not lay around the garden getting wet and soggy encouraging slugs and snails. Ever if there has been a severe frost or two, aphids can still persist in some instances. This can be a particular problem in the greenhouse when plants grown outside have been brought in to over winter. It is absolutely amazing where the aphids come from on some occasions and how quickly they can badly infect the host and then spread on to other plants. A quick and quite strong application of an insecticide can often be the only cure!

Keep a careful watch on the weather forecasts so that you can be aware of frost and snow predictions. A sudden severe frost, as happened last winter, can do an awful lot of damage if adequate precautions are not taken. For those of us who have heated greenhouses the problems are not so difficult. But if you are working with a cold house then when frosts are forecast you do need to take those additional measures to keep Jack at bay! Several layers of newspaper put over the tender plants will help. The frost may still get at the edges but with luck the main body of the plant will survive to produce growth for the following season.

When you have finished your work in the garden do remember to clean your tools and rub them over with a light film of oil – just a little extra care can ultimately save you money because your tools will last that bit longer. Drain out your hosepipe – if you have had need of it this year! Store it away from the winter frosts and snow – many a good pipe has been split open by a hard frost!

GARDENING TIPS NUMBER 31

Early in January is the ideal time to prune apple and pear trees but be careful not to prune if you have frosty conditions. Generally speaking pruning means cutting out diseased and dead wood and cutting back new growths to about two thirds of their length. If you have particularly long growths then use your common sense and cut out rather more. The criteria is quite simple – will the growth left bear the fruit it produces?, if not cut off up to a third of the new growth. In the case of tip bearing trees – the Bramley apple for example, you do not cut off the tips of the new shoots. With these trees it is a case of thinning them out to keep the tree open to the light and that can mean cutting out some quite thick wood. For that matter all trees need thinning and cutting back to keep their shape from time to time.

Ventilation is a very important part in the care and protection strategy in the winter greenhouse and cold frame. It is important in both of these enclosures to avoid heavy condensation. Some such is inevitable through the colder winter months no matter how careful we are. In the greenhouse the use of a paraffin heater is a big culprit – when one is in use it is a good idea, when conditions allow, to prop open a sidelight or vent just slightly to allow a flow of air. On good days the whole house can be opened up for a short time to get the glass completely free of moisture. Similarly with a cold frame, if conditions do not allow for the lights to be opened fully just prop up the top or bottom end of the lights by a couple of inches (5cm) to get a flow of air circulating. A word of warning, when there has been a fall of snow leave the lights on a cold frame closed until the snow and its accompanying frost have cleared naturally. If a particularly cold period is forecast an additional cover of an old piece of carpet or wood over the lights would be advisable as additional protection.

Those of us in the Downham Market Horticultural Society have already placed our seed orders for the coming season but for those who haven't, this period of the year is a time when you can relax, put your feet up and contemplate how you are going to organise your garden for the coming year and browse through the seed and plant catalogues at your leisure!

Have a happy Christmas and I wish you all great gardening in 2013.

Roy Coughtrey

The Smallholding in Autumn

Stay me with flagons, comfort me with apples

In a fairly miserable summer and a wet autumn the harvest that has brought us some comfort is that of the apple crop. The severe spring frosts which hit so many orchards were lenient with ours and most of our mature trees bore well. Not so the plum trees which only produce a pound or two between them.

Juicing was the thing so with the encouragement and direction of Hans who has



the kit we selected a Saturday in late October to be 'a juicing day'. We calculated that because of the lack of sun apples would be from two to three weeks later in their time for picking and this proved to be accurate. An enthusiastic group from the G4 catchment area convened at Pightle House bringing apples, bottles, soup, various pieces of equipment and most useful of all pairs of willing hands. It was a true community effort and it was remarkable to see how naturally and easily the dozen of us slotted into the tasks of washing and preparing the apples, mashing, pressing, bottling and pasteurising. Lunch of Elizabeth's soup and Pippa's bread, an assortment of cheeses and of course

apples if desired was an enjoyable break in the proceedings. It was a great day which we hope will become a regular autumn feature. The net product was 40 plus gallons of excellent juice for pasteurising, freezing or making cider.



Today's welcome sunshine is giving shine to the golden hornet crab apples which with their pollinating attributes may well have contributed to this year's crop. I am sure too that Luca's bees which have lodged with us throughout the year have made their contribution. After a dearth of honey bees in recent years it has been a welcome sight to see them on blossoms and other garden flowers. The smart turn round of crops on the farm land over the fence is a reminder to me of the many jobs on the holding waiting to be completed, and in some cases, started. I am distracted from my seasonal untidiness by wonderful colour of the field maple in the hedge on the corner. Another welcome distraction is the arrival of winter thrushes, field fares and redwings, to join the blackbirds. Blackbirds and fieldfares have already caught sight of windfall apples and the few late ones that are too high for us to reach will I hope, assure them of our welcome and good will. Lapwings with attendant golden plover paid a brief visit to the arable land on Fox Hill. They will surely return when it is colder.

While apples in store are a comfort, as is the vat of cider glurping away near the Aga, so too is a supply of logs and more wood to cut in the store. Keeping in tune with the seasons and trying to live off the land keeps one busy but is wonderfully worthwhile.

What sort of winter will be? We will know soon enough!

Robin Blackall

After thought; I am researching the ancient practice of "Wassailing" with the possibility of a "Wassail" to encourage our orchards into the New Year, watch this space!"

Photographs - Eileen Powell

THE BEST COMEBACKS

If you ever testify in court, you might wish you could have been as sharp as this policeman. He was being cross-examined by a defence attorney during a felony trial. The lawyer was trying to undermine the police officer's credibility

Q: 'Officer, did you see my client fleeing the scene?'

A: 'No sir. But I subsequently observed a person matching the description of the offender running several blocks away.'

Q: 'Officer, who provided this description?'

A: 'The officer who responded to the scene.'

Q: 'A fellow officer provided the description of this so-called offender. Do you trust your fellow officers?'

A: 'Yes, sir. With my life.'

Q: 'With your life? Let me ask you this then officer. Do you have a room where you change your clothes in preparation for your daily duties?'

A: 'Yes sir, we do!'

Q: 'And do you have a locker in the room?'

A: 'Yes, sir, I do.'

Q: 'And do you have a lock on your locker?'

A: 'Yes, sir.'

Q: 'Now, ... why is it, officer, if you trust your fellow officers with your life, you find it necessary to lock your locker in a room you share with these same officers?'

A: 'You see, sir, we share the building with the court complex and sometimes lawyers have been known to walk through that room.'

The courtroom EXPLODED with laughter and a prompt recess was called.

WOMEN'S REVENGE

'Cash, check or charge?' I asked, after folding items the woman wished to purchase. As she fumbled for her wallet, I noticed a remote control for a television set in her purse. 'So, do you always carry your TV remote?' I asked. 'No,' she replied, 'but my husband refused to come shopping with me and I figured this was the most evil thing I could do to him legally.'





CHASE THE JANUARY BLUES AWAY AT THE LIBRARY

It's free to become a library member and quick and easy to do so. A library card really is a passport to lots of opportunities for all ages. Just some of the great reasons to be a library member in Norfolk are listed below.

Did you know...

That you can borrow up to 15 books for free

That you can renew items online or over the phone?

That you can return your items to any Norfolk County Council library?

That you can access a number of paid-for websites that library members can use for free, including Ancestry.com that allows people to trace their family history?

That you can borrow maps and travel guides from the library at no cost?

That you can access the Internet and your email for free?

That Norfolk County Council has a digital library that allows all library members to download and borrow ebooks for free from the comfort of their own home?

Find the digital library at <http://digitallibrary.norfolk.gov.uk>.

During January, a voucher with offers on DVD hire, book reservations and more will also be available to library members. There's a limited number so make one of your new year's resolutions to visit your local library to get yours.

DOWNHAM MARKET LIBRARY

Friday 4th January 10am –1pm

Let us show you how to make the most of the library:

Find out how to download ebooks and audiobooks from the library website to a compatible device for free

Sign up for a free internet taster course

Learn how to search for books and other items on the library website from the comfort of your home

Access Ancestry.com for free and find out about other resources to help you research your family history

And much more.....!

Every Saturday morning in January between 10:30am and 12pm

Free family activities – visit www.norfolk.gov.uk/libraries for details

CHRISTMAS POEM

It's the month before Christmas
I rang Santa's place
To set up a meeting
A wee chat face to face.
An elf's voice recording
Said "Good morning to you
Your call is important
You've been placed in a queue.
If you are now using
A touch telephone
Press button one
After the tone.
If you want elves,
Please press button two,
Then wait a mo'
While I transfer you through.
Press button three
For toymaker's United
We'll play you some music –
Just listen, don't fight it.
If it's Santa you want
Then press button eight,
If it's complaints department
You'll have a long wait.
If you've missed this message
Just press number ten,
I'll go over the options
Again.....and again.
Irritated by now,
I press button eight,
At last I get Santa
After a bit of a wait.
"What's going on?"
I asked the old guy.

"Rudolph's idea"
He replies with a sigh.
"Says we must modernise,
Update things fast,
We cannot continue
To dwell in the past.
It's all about image –
A look for today,
He's brought in Ferrari
To re-model the sleigh.
He says my red suit
Is just over the top
He's taken it down
To the charity shop.
Trinny and Susannah
That horrendous twosome,
Are now going to dress me
In something quite gruesome,
The humiliation
I just can't express
As in front of the mirror
I had to undress.
They prodded and pokes
In the most personal places,
With determined frowns
Engraved on their faces.
Finally they've come up
With an outfit in green,
Which I have to admit
Looks completely obscene.
A girdle has hidden
My fat stomach, no doubt,
But where was the harm
In it all hanging out?
Apparently my curls
Went out with the ark-

To complete the make-over
“They’ve engaged Nicky Clarke.
He’s straightened my hair
With straighteners, I think,
Applied serums and mousses –
And boy! Do I stink.
He’s pulled bits of hair
Through a wee rubber hat
To give me green hi-lights-
How appalling is that!!!
But it gets worse”
Santa says with emotion,
“Rudolph’s on fire
With this Santa promotion.
He’s got me a place,
On that jungle TV show,
With the bugs and the flies
And the stars you don’t know.
You live with the slimy
The disgusting, the low,
And that’s just the people
Involved in the show!”
I could see that old Santa
Was in quite a state,
After all said and done
He’s a really good mate.
“Whoa, Santa” I said,
“Remember – you’re boss-
Let’s show old Rudy
You don’t give a toss”
So we put the green outfit
In the recycling bin,
We’ve re-curved his hair
And the beard on his chin.
We sold the Ferrari,
Knocked up an old sleigh,

The TV contracts -
We just threw away.
We hurried on down
To the charity store
Bought back the old suit-
Re-cycled once more.
The telephonist elves
With their airs and graces
Have been re-employed
In those call centre places.
And Santa is happy
With the old things restored,
Traditions at Christmas
Cannot be ignored.
Far more important
Than things we can buy,
He’s wiser than most
That ‘canny’ old guy.
He gives not a fig
For these fashions or trends
More important by far –
Are your family and friends.





Volunteers required...

To help monitor
rare and endangered plants
of the Brecklands
in 2013

If you live in the area or regularly visit then
you could be the person we are looking for
to join the volunteers team
and help Plantlife's practical conservation
work

Full training, kit and support will be provided



For more information and to register your interest for 2013 please
contact us

Tel: 01722 342743

Email: sue.southway@plantlife.org.uk

Leave details on our survey form: www.wildaboutplants.org.uk/brecks

Website: www.plantlife.org.uk



BRECKLAND LAUNCHES NEW EXTERNAL TRAINING SERVICE

Breckland Council has always worked hard to ensure that its customers are highly satisfied with the services it provides. With such a variety of customers including residents, businesses and visitors and so many partners to work with, it's rolling out its expertise with the launch of a new external training service, Breckland Training Services.

The training on offer is designed to meet the specific needs of the public sector, charities, local authorities and small businesses. Courses are bespoke and completely unique in design and include courses such as; the ability to adapt, team working, managing workloads, communicating effectively, negotiating and event management.

The Council guarantee you won't have experienced anything like it before and have already delivered training to the University of East Anglia and Luton Borough Council.

Richard Wills from Breckland Training Services says; "The feedback has been fantastic. People have really enjoyed the courses and got tremendous benefit out of them. One aspect that people particularly enjoy is that the courses are interactive. A lot of other training is very systems specific but the training we offer is interactive and that adds to the overall impact. Because we are public sector, the cost of the courses covers our own costs only. This makes us outstanding value for money."

Cllr William Smith, Executive member for Internal Services who is fully supportive of the new training services said; "The Breckland Training Service is held in high regard, by members, officers and by its peers. The quality of its training services, for officers and members, has been formally recognised by the award of Member Charter Plus and accreditation by Investors in People. We have an outstanding training team and want to extend its services with public and voluntary sector partners and, eventually, to non-public sector customers."

You can follow Breckland Training Services on Facebook and Twitter or via the website www.breckland-training.co.uk

To request a BTS prospectus call 01362 656870 or email training@breckland.gov.uk

For further information please contact Lisa Green on 01362 656330 or Pam Sayle on 01362 656813.

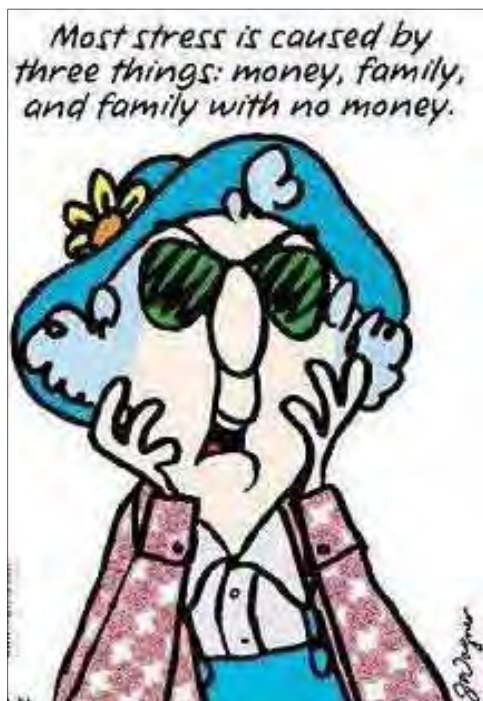
INCINERATOR UPDATE

If the incinerator is defeated at the public inquiry, it would help pave the way for better/cheaper waste treatments. A better solution could actually bring benefits to West Norfolk instead of blight it. Please do what you can to help win the inquiry. Above all else the easiest thing that anyone can do is, simply turn up and watch it, bringing friends and family. Listen to both side's arguments and judge for yourself whether planning should be refused. The initial meeting starts at Lynn Sport on 28th November 2012 10am. The next important date is February 26th 2013 10am at the Corn Exchange.

Please Visit www.farmerscampaign.org to see how easily you can help.

The very popular **Indoor Christmas Market** returns on **8th Dec 2013 Fairgreen, Farms, Hill Road, Fair Green Middleton, PE32 1RN** 9-5pm. Art & crafts, Live harp music, choir, mulled wine, raffle prize draw. Entry 50p, kids free. We are also publishing the 2013 KLWIN cartoon calendar. Please come to our fund raising events, we have to raise around £25,000 to pay for all the professional help needed.

Mike Knights (Fairgreen Farms, Hill Road, Middleton, Norfolk PE32 1RN)



BRECKLAND ART TRAIL

Don't miss the Breckland Art Trail which is taking place in venues across the district from 1st – 9th December. Look out for the brochure which gives locations and times of opening for individual artists and groups.

As part of this initiative the EcoTech Centre, Swaffham is playing host to two groups - Icení Botanical Artists and EcoTech Artists. A total of over twenty artists will have work for sale at EcoTech from Monday 3rd December to Friday 7th December 10am – 4pm.

The EcoTech Artists' exhibition will include work by four Beachamwell and Drymere residents:

Janet Blackburn - hand-made dolls' clothes

Leah Spencer – original prints

Philip Spencer – photography

Janet Walker – weaving

There's plenty of parking space at EcoTech and a good cafeteria, so we look forward to seeing some Group 4 readers during the week.

Enquiries - Leah Spencer 01366 328536



Beachamwell WI

Saturday December 1st

12.00 -3.00pm

Beachamwell Memorial Hall

Christmas Fayre

You are very welcome to join us, buy Christmas goodies and enjoy festive refreshments.

Enquiries:

Vesna Hudson 01366 327030 or

Val Sidey 01366 328922

Barton Bendish Film Club



Proudly Presents:

'The Pirates'

In an adventure with Scientists

Saturday December 1st

2.30pm

Village Hall

Tickets £2 for children, accompanying adults free

All children must be accompanied by an adult

Refreshments included

Box Office: 01366 347849

email: cinemabarton@gmail.com

www.bartonbendishfilmclub@btck.co.uk

Barton Bendish Film Club



Proudly Presents:

**'The Best Exotic Marigold
Hotel'**

Supported by The Berney Arms

Saturday December 1st

7.30pm

Village Hall

Tickets £4 in advance £5 on the door

Festive refreshments included

Raffle

Box Office: 01366 347849

email: cinemabarton@gmail.com

www.bartonbendishfilmclub@btck.co.uk

Swaffham

Festival of Christmas Trees

Church of St Peter & St Paul

**Sunday December 2nd 6.00pm
until**

Sunday December 9th 4.00pm

Open Daily 10.00am - 4.00pm

Friday 10.00 am - 9.00pm

Free admission

Refreshments available

Beachamwell

Book Group

Tuesday December 4th

7.00 - 9.00pm

Beachamwell Memorial Hall

Books to be discussed at this meeting

Various Titles

No Meeting in January!

Next Meeting: Tuesday February 5th

£2.00 + Bring & Buy Bookstall

All welcome

Enquiries:

Leah Spencer 01366 328536

Beachamwell

Wednesday Walkers



Wednesday December 5th

Meet at 10.30am outside

Beachamwell Memorial Hall

**Walk will be
approximately 2½ miles**

Enquiries:

Sue Pennell 01366 328 452



Beachamwell WI

Thursday December 6th

7.30pm

Beachamwell
Memorial Hall

'Homemade Chocolates'

Mrs M. Furness
Visitors Welcome

Enquiries:
Jenny Gabrielsen 01366 328297

Marham Bingo

Friday December 7th

3.00 - 5.00pm

Marham Village
Hall

Enquiries:
Norma Hayter 01760 339093

Swaffham Methodist Church



Come and see the Church
decorated for Christmas
and meet
Father Christmas

Saturday December 8th
9.30am - 12noon

Barton Bendish Hall of Stalls

Saturday 8th December

10am -4.00pm

Village Hall

Come and buy your Christmas gifts.
A wide range of handmade crafts,
cards and ideal presents available.

Refreshments and light lunches.

Enquiries:
Mhari Blanchfield 01366 347849
Linda Webster 01366 347563

Barton Bendish Christmas Tree Festival

Saturday 8th December

10am - 4.00pm

Sunday 9th December

12 noon - 4.00pm

Please come and join us
at St Andrew's Church
to see an amazing display of
imaginatively decorated trees.

There is also a Remembrance Tree to
leave your own thoughts for loved
ones and a tree for
children's letters to
Father Christmas

Enquiries:

Mhari Blanchfield 01366 347849

Linda Webster 01366 347563

Wereham Christmas Bazaar

Sunday December 9th

2.00pm — 4.30pm

Wereham Village Hall

There will be Santa in his Grotto
A Cake Stall, Raffle, Tombola and
Bowling for prizes - a turkey for the
adults and sweets for the children.

Refreshments.

Other stalls are available at £5.00 per
table.

Entry fee for adults 20p, children free

Enquiries:

Janet 01366 500732

Doreen 01366 500218

Fincham

Coffee Morning

Wednesday December 12th

10.00 - 12 noon

St Martin's Fincham

May Pinches 01366 347228

Marham Coffee Morning

Thursday December 13th

10am - 12noon

Beachamwell Afternoon Tea and a Chat Wednesday December 12th

2 - 4pm

Beachamwell

Memorial Hall

Enquiries

Sonia Williams 01366 328774

Holy Trinity Church Marham

Enquiries:

Norma Hayter 01760 339093

Barton Bendish

**'An Afternoon of Wartime
Christmas Entertainment'**

Saturday December 15th

3.30pm

Come and join in the Christmas
celebrations at this afternoon of
entertainment for all ages!

The entertainment will be followed by
light refreshments and mulled wine.

Entrance is free but donations are
gratefully appreciated.

Enquiries

Mhari Blanchfield 01366 347849

Linda Webster 01366 347563

Fincham Chorus Christmas Concert

Sunday December 16th

St. Martin's Church

Fincham

7.30pm.

Tickets at £4.00 to include mulled
wine and mince pies in interval.

Proceeds to St. Martin's restoration
Fund.

Enquiries

Barbara Smith

Fincham Post Office & Stores

01366 347281

Shouldham

**Nine Lessons and Carols
Monday December 17th**

7.00pm

All Saints' Church

Enquiries

Ann Hullah 01366 347814

Shouldham Thorpe

**Carols with Marham Cherry
Handbell Ringers**

Wednesday December 19th

6.30pm

St. Mary's Church

Enquiries

01366 347618 or 347829

Boughton

**Nine Lessons and Carols
All Saints' Church**

Tuesday 18th December

7 00pm

Enquiries;

Pam Wakeling

01366 500429

**Followed by
Refreshments**

Beachamwell

Carols by Candlelight



Friday December 21st

6.30

St Mary's Church

We hope that you will join us for our annual carol service and stay afterwards to enjoy mulled wine and mince pies.

Enquiries

Gill Sanderson 01366 328818

Wereham

Carols by Candlelight

Sunday December 23rd

4.30pm

Wereham Village Pond
with Dom and Friends

Come and join us for a Festive treat!

Included in ticket price - Hotdog, warm mince pie, tea, coffee, spiced hot chocolate and squash for the kids.

Tickets in advance only: £3 per person, or family ticket £12 (2 adults, 2+ children).

All donations of battery operated lights, tea lights, jars and mince pies greatly received.

All proceeds to the New Wereham Village Hall.

Enquiries

Victoria Gray on 01366 501277 or
07725513583.



Festive Village Walk

Saturday

29th December

Boughton Village Caravan
invite you to join them for a

Festive Village Walk

(weather permitting)

The walk will incorporate the three footpaths within and around the village

Meet at 10.30am at
All Saints' Village Centre

Suitable footwear is recommended as
some of the walk will be across field

Dogs must be on a lead

Everybody Welcome

'A Boughton Village Caravan Production'

Beachamwell Wednesday Walkers



Wednesday January 2nd

Meet at 10.30am outside
Beachamwell Memorial Hall
**Walk will be
approximately 2½ miles**

Enquiries:

Sue Pennell 01366 328 452

Fincham Coffee Morning

**Wednesday
January 9th**

10.00 - 12 noon
St Martin's Fincham

Enquiries
May Pinches
01366 347228

Beachamwell

Parish Council Meeting

Monday January 14th

7.30pm

Memorial Hall

Enquiries:

Eileen Powell 01366 328648

Barton Bendish

Ordinary Parish Council Meeting

Wednesday January 16th

7.00pm

Village Hall

Enquiries:

Ian Berchem 01366 347759

Beachamwell Coffee Morning

**Saturday
January 19th**

10 - 12am

4 All Saints Way

Enquiries:
Marie Rich 01366 328320

Proceeds to St. Mary's Church



'Music and Healing'

Rose Redgrave, Viola Player with the
Coull Quartet

Sunday January 22nd 3.00pm
Swaffham Assembly Rooms

£7.00 for members

£10 non-members

Accompanied children free

Tickets from
Green Parrot 01760 724704
Ceres Bookshop 01760 722504

Enquiries
Eileen Powell 01366 328648

Barton Bendish



Traditional Burns Supper

**Saturday
January 26th
7.30pm for 8.00pm
Village Hall**

**Tickets £10
Including "a wee dram"
Wear a token piece of tartan!**

Enquiries:
Mhari Blanchfield 01366 347849
Linda Webster 01366 347563

Beachamwell Craft Group

**Thursday January 31st
2 – 4.30pm**

Beachamwell Memorial Hall

Bring along something you are
already working on or start a new
hobby in a friendly group of like
minded people.

£2.00 + Bring & Buy
All welcome.

Enquiries:
Leah Spencer 01366 328536



Boughton Winter Coastal Walk

Once again, we are organising a winter walk,
taking in the spectacular scenery to be found
around the Norfolk Coast. Just the thing to
blow away the cobwebs,

**Sunday February 17th 2013, followed by a
pub lunch**
(NB Different pub this year)

Please contact Mark or Sue
on 01366 500461 or
e:mail mark@pogmore.myzen.co.uk
to book your place

Everybody Welcome

'A Boughton Village Caravan Production'

THE BRECKLAND SOCIETY

Forthcoming Events

**Friday 8th February 2013, 7.00 pm
'Roman Roads in the Landscape'**

**A talk by Archaeologist James
Albone in Barnham Village Hall.**

**Friday 15th March 2013 7.00 pm
'Hearth, Heath and Howe: Magic
and Witchcraft in the Breckland'**

**A talk by Imogen Ashwin in
Swaffham Community Centre,
Campingland, Swaffham.**

Further information from:

www.brecsoc.org.uk or email:
info@brecsoc.org.uk

DIARY DATES

2013

1. **January 16th** Wednesday 'Tea and a Chat' Beachamwell 2 - 4pm
Sonia Williams 01366 328744
2. **February 5th** Tuesday Beachamwell Book Group 7.– 9pm BMH
Leah Spencer 01366 328536
3. **February 20th** Wednesday 'Tea & a Chat' Beachamwell 2 - 4pm
Sonia Williams 01366 328744
4. **February 22nd** Friday Talk 'A Career as a Cold War Soldier' Lt Col Berchem
Mhari Blanchfield 01366 347849 & Linda Webster 01366 347563
5. **March 11th** Monday Beachamwell Parish Council Meeting 7.30pm BMH
Eileen Powell 01366 328648
6. **March 20th** Wednesday 'Tea and a Chat' Beachamwell 2 - 4pm
Sonia Williams 01366 328744
7. **March 20th** Wednesday Barton Bendish Annual Parish Meeting 7pm
Ordinary Parish Meeting 7.30pm Barton Bendish Village Hall
Ian Berchem 01366 347759
8. **April 17th** Wednesday 'Tea and a Chat' Beachamwell 2 - 4pm
Sonia Williams 01366 328744
9. **May 4th** Eight Parish Country Fayre to be held at Fincham M/Hall and Field.
Sarah Addly 01366 347487
10. **May 5th** Sunday Beachamwell Half Marathon—set off from Church 9.00am
Brian & Carole Wilson 01366 328628
11. **May 13th** Monday Annual Parish Council Meeting followed by Parish
Council Meeting 7.30 Beachamwell Memorial Hall
Eileen Powell 01366 328648
12. **May 15th** Wednesday Annual Parish Council Meeting 7.00, Ordinary Parish
Council Meeting 7.30 Barton Bendish Village Hall
Ian Berchem 01366 347759
13. **June 9th** Sunday Gardens Open Boughton
Pam Wakeling 01366 500429
14. **June 23rd** Sunday Gardens Open 12 noon - 5pm Beachamwell
Alan Butler 01366 328817
15. **August 18th** Sunday Beachamwell Horticultural Show BMH
Carole Wilson 01366 328628

BARTON BENDISH & EASTMOOR VILLAGE NEWS

Barton Bendish Film Club

Due to an unavoidable error the advert for the second of Barton's two films scheduled for Saturday December 1st did not appear in last month's edition of G4N - apologies for any inconvenience.

The two film showings on Saturday 1st December will be:-

'The Pirates!'

For the first time we're delighted to be able to present an afternoon Matinee performance for our younger (and younger at heart), film goers, showing 'The Pirates' at 2:30pm. An animated film from the creators of 'Chicken Run'. All tickets: £2 with accompanying adults free. This is an occasion for all the family and we ask that children be accompanied by an adult. Refreshments included. Running time: 88 minutes.

'The Best Exotic Marigold Hotel'

An evening 7:30pm showing of this new British Comedy, starring Bill Nighy, Dame Judi Dench & Dev Patel. A group of British retirees decide to 'outsource' their retirement to less expensive and seemingly exotic India. Running time 124 mins. Tickets £4 in advance, £5 on the door. Advanced booking advised. Festive refreshments included! Raffle.

Please visit our website www.bartonbendishfilmclub.btck.co.uk, email us at cinemabarton@gmail.com or telephone 01366 347849 for tickets or more information.

Please Note

The correct date for 'An afternoon of Wartime Christmas Entertainment' is Saturday December 15th at 3.30pm

Come and join in the Christmas celebrations at this afternoon of entertainment for all ages!

War time dress is optional for the audience but if you have any 'suitable costumes' you could lend us for the 'cast' we would be very pleased to hear from you! If you would like to take part, we would also be very pleased to welcome you to the 'concert party'! The entertainment will be followed by light refreshments and mulled wine. Entrance is free but donations are gratefully appreciated. For more information and to book your seat please contact:-

Mhari 01366 347849 or Linda 01366 347563

BARTON BENDISH & EASTMOOR VILLAGE NEWS

Harvest Supper

This year it was the turn of Barton Bendish to host the Harvest Supper and 70 people gathered in the village hall for a wonderful evening of hearty food and song. After a delicious supper of soup, baked potatoes, ham and salad followed by home made apple crumbles and pies the gathering was entertained by the talents of:

- The Singing Shepherd aka David Mason
- Jill and her poems
- Lissa Kinsey and Singers, (Linda, Sandy, Celia, Anna and Anthony).

It was a great night enjoyed by all.

A very big thank you goes to the group of ladies who not only provided the feast and served it out but also cleared up afterwards! Just short of £500 was raised. The evening could not have been such a success without you and your help was very much appreciated.

Mhari Blanchfield & Linda Webster

Annual Bonfire and BBQ

Once again Barton was blessed with a dry evening for their annual Bonfire at the Hall kindly hosted by Luca and Carolyn Paduli. Glasses of wine and large, delicious jumbo hot dogs (choice of pork or venison sausage) were enjoyed by the crowd before Luca set off to light the huge bonfire followed by a gang of excited children in a scene reminiscent of the Pied Piper. It was a good opportunity to meet up with people connected with the estate that you don't often see and have a chat. Thanks from everyone to Luca and Carolyn as well as those who were cooking the hot dogs and serving the drinks.

Jill Mason

Thank you to Luca and Carolyn for kindly hosting the BBQ evening Barton Bendish Hall in aid of St Andrew's Church and the Village Hall. Thanks to everyone to came out and supported this event. Over £240 was raised. Many thanks also to all those who helped in organising the evening and for making the occasion such a success.'

Anthony Blanchfield



BARTON BENDISH & EASTMOOR VILLAGE NEWS

Transport to Hospital Appointments

In our rural villages it seems that those who are 'getting on a bit' or are not in the best of health are currently facing a big problem in getting to hospital appointments at QEH.

The provision of hospital cars to ferry them to appointments has ceased. I believe it is still possible to get transport but this has to be paid for on a mileage basis which appears to include the cost to and from the driver's home to that of the person needing transport. I personally know of two recent cases concerning hospital appointments when someone from Barton had to fork out £26 to get to Lynn and it cost a lady from Beachamwell £55 for a taxi. It seems in our villages where we don't have access to any regular public transport that this is a double whammy for if we had a bus (like people in towns) and a bus pass not only would we probably be able to get to the hospital, albeit perhaps with difficulty, but we'd also get there for free. If you are feeling fit enough, (which isn't always the case) one option is to use the X1 service (Tel 0871 200 22 33) which runs between Peterborough and Lowestoft at half hour intervals and stops at Narborough (where there's plenty of free parking space to leave a car) and then take the number 42 which is advertised to run every ten minutes from King's Lynn bus station to the hospital. This still means you need to get to Narborough though but if you have a bus pass it needn't cost anything.

Has anyone any other suggestions?

Another difficulty is finding someone to do odd jobs such as cleaning out gutters or putting up a shelf. These are usually 'one off' small jobs and tradesmen either haven't got the time or inclination to be bothered with these, besides which many older ladies living on their own are apprehensive about letting a stranger into their house. Once again – any suggestions?

Jill Mason

Parish Council

Changes to Refuse Collection Service

All households will shortly receive a leaflet entitled "Your Bin Service is Changing". The new service, which starts on 2nd April, 2013, will include a weekly collection of food waste (eg potato peelings, teabags, chicken/pheasant carcasses, etc). Black bins and green bins will be emptied on alternate weeks.

BARTON BENDISH & EASTMOOR VILLAGE NEWS

The brown bin service will continue as before. Collection day calendars will be delivered before the new service starts.

Existing 140 litre black bins will be replaced by 240 litre black bins; you may, however, retain your 140 litre bin should you prefer to do so. A new 23 litre food waste bin and a 7 litre kitchen bin will be issued at the same time. The latter requires the use of compostable kitchen bin liners 50 of which will initially be provided free; thereafter, you buy your own. Again you can opt not to have these food waste bins and simply continue to dispose of kitchen waste in a kitchen pedal bin with a supermarket carrier bag liner(!) which goes in the black bin.

Should you wish to advise KL&WN Borough Council of your wish to retain your 140 litre black bin and/or of the fact that you do not want a food waste bin, you should contact them before mid-December, 2012 on:

Telephone Helpline: 01553 616200

E-mail: bin.change@west-norfolk.gov.uk

Website: www.west-norfolk.gov.uk/refuseandrecycling

The leaflets will hardly be out in time for people to meet this deadline, hence this article (based on facts gleaned from a Borough Council briefing session).

The next Parish Council meeting is on Wednesday 16 January at 7.00pm

Lt Col I.R.Berchem, Parish Clerk

Forthcoming Events all details on pages

Saturday December 1st Barton Bendish Film Club (Two films)

Saturday December 8th Hall of Stalls

Saturday December 8th and Sunday December 9th Christmas Tree Festival

Saturday December 15th 3.30pm Christmas Entertainment

Sunday January 6th Breakfast Church at 9.30am

Saturday January 26th Burns Night Supper at 7.30pm

Friday February 22nd Illustrated Talk by Lt Col Ian Berchem 'A Career as a Cold War Soldier'

Happy Christmas

On a personal note I'd just like to thank everyone who has contributed in any way to making living in Barton such a pleasure.

Happy Christmas and a Healthy New Year to you all. ***Jill Mason***

BEACHAMWELL, SHINGHAM & DRYMERE VILLAGE NEWS

St. Mary's Church

First of all I would like to thank David Mason for his fascinating illustrated talk on "Wild Breckland". David combines information, illustration, humour and education into his talks, all in large quantities, and we all had a brilliant evening. £200.50 was made for church funds and on behalf of the PCC I would like to thank David (and Jill) very much indeed. David has offered to give us another talk sometime next year which is something to look forward to – so watch this space !

I do hope you will join us at our Christmas Services. Our Carols by Candlelight Service will be held on Friday 21st December at 6.30 p.m. The church will, as usual, be decorated beautifully for Christmas and lit with many candles. We do hope you will join us in singing the traditional Christmas Carols and then stay after the Service for mulled wine and mince pies. There will also be a Christmas Day Service in Beachamwell starting at 11 a.m.

Nearly two years ago we were left an oil painting of the church painted by the artist Warren Storey with the request that it was hung in the church. The painting needed framing and as we were putting a major effort into raising funds for the bells project it was decided to defer hanging the painting until a later date. The picture has now been framed and will soon be hung at the back of the church so please do take a look when you are next passing.

On that subject, it is intended that the church remains open during daylight hours every day from the beginning of December and Ian Phillpot has kindly organised a rota of people to open and close the church each day. This has necessitated some changes and anything of value (ie the brass crosses and vases) will be removed and replaced by glass vases and a wooden cross that is being made for us. We would still be very grateful if people who live near the church, or are passing the church, would let either John Sanderson or myself know if they notice anything unusual going on.

Marie Rich is holding a Coffee Morning on Saturday 19th January at 4 All Saints Way from 10 a.m. – 12 noon. Please do join us for an enjoyable morning which will help brighten up the dull days of January and raise some money for the church – so in the modern way of speaking – it is a "win win" event.

Our December Afternoon Tea will now be held on Wednesday 12th December From 2 p.m. – 4 p.m. in Beachamwell Memorial Hall. This is a week earlier than

BEACHAMWELL, SHINGHAM & DRYMERE VILLAGE NEWS

advertised – we will put extra advertising out nearer the time.

Finally on behalf of John Sanderson and myself and all the PCC of St Mary's Church I would like to wish you all a Very Happy Christmas.

We would also like to sincerely thank everybody who has supported our Church in so many ways over the last year.

Graham Williams (Churchwarden)

Flower Rota

December:

2nd Carole Wilson, **9th** Brenda Branch, **16th** Karen Butler & Jeanne Flynnne,

23rd Christmas [Several People] [Carol Service Friday 21st]

January:

6th Anne Clarke, **13th** Jenny Gabrielsen, **20th** Vesna Hudson, **27th** Diana Lambert

Many thanks to Brenda Branch, Jenny Gabrielsen, Pam Haslam, Diana Lambert, Olwyn Locke, Betty Phillpot, Gill Sanderson, Sonia Williams and Carole Wilson who very kindly and generously decorated the Church for Harvest last month. Your work and efforts are greatly appreciated.

If anyone is interested in joining the Flower Rota please contact me and I will explain what is involved.

Eileen Powell

Village Hall Shrub Borders

On Saturday 17 November a group of volunteers cleared borders on the north and east facing walls of the village hall, planted a mixture of evergreen and deciduous shrubs and re-planted existing spring bulbs. It is hoped that this scheme will provide year round interest and a valuable source of food for wildlife.

I would like to thank the Village Hall Committee for funding the project; Janet and Mike Walker, Matt Brown, Peter Garner and Philip Spencer for giving up their morning to help with the physical work and Westacre Gardens for all their helpful advice and for supplying the plants.

I have drawn up a plan for the upkeep of the borders and would like to thank Janet Blackbourn for offering to help with this. I hope the borders will bring pleasure to people in the village and further enhance our excellent village hall.

Leah Spencer

BEACHAMWELL, SHINGHAM & DRYMERE VILLAGE NEWS

WI

The nineteen members and guests who attended the November AGM Meeting really enjoyed the supper provided by the Committee. Thank you to all who prepared and served it. Jenny, Vesna and Eileen gave their annual reports and



Meg Dorling, our Advisor, was on hand to help with voting for the new Committee. Maureen gave the 2013 programme which certainly looks interesting.

Awards were presented to various members. The Ruth Rix Vase for Members

Craftwork was presented for the first time. John Rix thought it would be an excellent way for members to remember his Mother and we were all delighted with the idea. His Partner, Susie, looked very carefully through the many items to view and in the end decided on the lovely cardigan designed and knitted by Vesna. She was absolutely delighted to be the first to receive the lovely vase and also a bottle of bubbly from Suzie. Members thank John for providing this vase,

The table flowers were presented to Margaret Webster who has been unwell recently but is now well on the way to recovery.

Members were reminded of the Christmas Fayre to be held in the Memorial Hall on December 1st 12-3pm.

Next Meeting December 6th (Homemade Chocolates) If you are interested in belonging to the Largest Women's Organisation in GB then come and join us, you will be most welcome.

Carole Wilson

Photograph - Eileen Powell

Mobile Post Office

Please note new times

Monday, Tuesday, Wednesday, Thursday and Friday: 11.15 - 12.00

BEACHAMWELL, SHINGHAM & DRYMERE VILLAGE NEWS

Wednesday Walkers!

The Walkers from Beachamwell were joined by friends from Barton Bendish,



Wereham and Runcion Holme on the bright sunny morning of November 7th so that, together with three well-behaved dogs (on leads), twenty-one of us set off to explore Shingham and beyond.

We passed the mighty ancient oak in Stamble's Plantation and stopped to admire the beauty of St. Botolph's church. We glimpsed a burial mound, passed Rannock's Forest Farm and skirted Larch Wood on our circular walk along the footpaths and bridleways – a distance of two and a half miles – before returning to the Village Hall and no one got lost!

On Wednesday 5th December we plan to explore the south-west corner of the parish and on the first Wednesday in 2013 we hope to venture northwards to the Warren, over Toot Hill and to the Lodge before turning back to the Village.

We meet at 10.30 beside the Village Hall and everyone is welcome but we don't walk if it is pouring with rain!

If you want to plan walking excursions for yourself, check out

www.countrysideaccess.norfolk.gov.uk/interactive-map.aspx as this shows all the rights of way and land with public access in the county.

Sue Pennell

BEACHAMWELL, SHINGHAM & DRYMERE VILLAGE NEWS

Parish Council

Mike Nairn - Our New District Councillor

Mike has lived and worked in the Breckland area since 1975. Initially, he was stationed at West Tofts with the Royal Military Police and subsequently, after he joined the Norfolk Constabulary in 1976, he lived and worked in Thetford until he took over the Weeting Beat in 1978. In the 80's he joined Weeting Parish Council and was a member for several years before standing down due to being posted to Diss to work. For several years his area of work covered Foulton, Little and Great Cressingham whilst he worked out of Watton. He still lives in Weeting.

He retired from the Police in 2005. In 2006 he became a Volunteer Trustee with the Brandon & Mildenhall Citizens Advice Bureau and then became the Chairman of Trustees in 2010. In 2011, Brandon & Mildenhall CAB merged with the Haverhill and Bury St Edmunds Bureau and Mike was elected Chairman of the newly formed Suffolk West CAB. In the interim he stood for election to Weeting Parish Council in 2011 and duly became a member of Weeting Parish Council and earlier this year was elected as Chairman.

Sadly, Bernard English who represented Mid-Forest Ward on Breckland District Council retired on Ill-Health grounds. Bernard passed away in July 2012 and Mike stood in the By-Election to replace him. Since being elected as the member for Mid-Forest, Mike has been appointed to the Audit Committee and is also currently working on the Boundary Commission Electoral Review Working group.

Mike and his wife Sue are members of the Thetford Singers and the West Norfolk Gilbert & Sullivan Society. They are members of the Weeting History Group, Volunteer Room Stewards with the National Trust at Oxborough Hall, qualified Scuba Divers and Mike holds a Private Pilots Licence.

Mike is committed to strengthening the communities in his Ward in any way he possibly can. He believes the villages are often neglected and overlooked but this could be redressed in part with the work to improve the IT infrastructure in Breckland.

Mike can be contacted by e-mail at mike.nairn@breckland.gov.uk or by phone on 01842 810212 should you have anything that you believe he could help you with.

Jubilee Mugs

Please contact Cllrs Matthew Adcock 01366 328848 or Cllr Patricia Clarke 01366 328983 if you haven't yet received your mug.

COMMUNITY NOTICE BOARD DECEMBER

MOBILE LIBRARY VISITS - Please note changed days/times

DATE	VILLAGE	LOCATION	TIME
Thursday December 20th	Barton Bendish	Hatherley gardens	9.40am
	Beachamwell	Post Office	10:05 am
	Drymere	Telephone Box	10:40 am
	Boughton	Sycamore House	15:20 pm
		Mill Road	15:35 pm
Thursday December 6th and 20th	Wereham	The Pond	9:30 am
		Queen's Close	16:20 pm

For services to all 'Group 4' villages ring Mobile Library Information on 01603 222267 or look at the website - www.norfolk.gov.uk/Leisure_and_culture/Libraries/Mobile_libraries

VILLAGE BUS SERVICES

FROM	ROUTE	OPERATOR	DESTINATION
Barton Bendish	31 (Saturday)	Lewis Coaches	Swaffham
Beachamwell	31 (Saturday)	Lewis Coaches	Swaffham
	18 (Tuesday)	Eagles Coaches	King's Lynn & Swaffham
Boughton	18 (Tuesday)	Eagles Coaches	King's Lynn & Swaffham
Wereham	28 (Mon to Sat)	Coach Services	King's Lynn
	40 (Mon to Sat)	Coach Services	Thetford/Downham

Timetable requests:- (01603) 228888, Traveline (08706) 082608 (www.traveline.org.uk)

FARMERS' MARKETS

Ely	Second and Fourth Saturday 8:00-2:00pm (8th and 22nd)
Fakenham	Fourth Saturday 8.30am to 12:00pm (22nd)
RAF Marham	Third Friday 9:00am to 2:00pm (21st)
Swaffham	First and Third Sunday (2nd and 16th)
Watton	Sadly no longer trading

For information:- www.farmersmarkets.net or your local Tourist Information Office

VILLAGE AND PARISH HALL BOOKINGS

Barton Bendish	Bill Tasker	01366 347432
Beachamwell	Caroline Sanderson	01366 328244
Boughton	Pam Wakeling	01366 500429
Wereham	Doreen Rolph	01366 500218

CHURCH SERVICES

December 2012

DATE	TIME	LOCATION	SERVICE
2nd December	09.45 am	Shouldham	Morning Prayer
	10.30 am	Marham (HT)	United Morning Service
	11.00 am	Beachamwell	Holy Communion
	06.00 pm	Wereham	Evensong
9th December	9.30 am	Shouldham Thorpe	Holy Communion
	10.00 am	Barton Bendish	Christingle Service
	10.00 am	Boughton	Breakfast Church
	06.00 pm	Fincham	Evensong
	06.00 pm	Marham	Methodist Carol Service
16th December	09.45 am	Shouldham	Holy Communion
	11.00 am	Beachamwell	Family Service
	06.00 pm	Marham	Carols by Candlelight
	06.00 pm	Wereham	Carol Service
23rd December	09.30 am	Fincham	Holy Communion*
	11.00 am	Boughton	Holy Communion*
	06.00 pm	Barton Bendish	Holy Communion*

*** Please be aware that these three services may change at short notice**

Other carol services page 23 & 24

Services for Christmas Day to be found on page 4

30th December 11.00 am Shouldham Group service of Holy Communion

THURSDAY COMMUNIONS

5th, 20th at Fincham, 13th at Boughton. **No service on 27th**

Services at 10:00 am followed by tea/coffee. All Welcome

CHURCHWARDENS

Barton Bendish	Mhari Blanchfield	01366 347849
	Linda Webster	01366 347563
Beachamwell	John Sanderson	01366 328818
	Graham Williams	01366 328774
Boughton	Pam Wakeling	01366 500429
Wereham	Sheila Smith	01366858165

BAPTISMS AND WEDDINGS

Please contact the Rev'd. Barbara Burton 01366 348079 or the Churchwarden in your parish.

CHURCH SERVICES

January 2013

DATE	TIME	LOCATION	SERVICE
6th January	09.30 am	Barton Bendish	Breakfast Church*
	09.45 am	Shouldham	Morning Prayer
	10.30 am	Marham (HT)	United Morning Service
	11.00 am	Beachamwell	Holy Communion
	06.00 pm	Wereham	Evensong
13th January	09.30 am	Shouldham Thorpe	Holy Communion
	10.00 am	Boughton	Breakfast Church
	10.30 am	Marham (MC)	Morning Service
	06.00 pm	Fincham	Evensong
20th January	09.45 am	Shouldham	Holy Communion
	10.30 am	Marham	Village Service
			Holy Communion
	11.00 am	Beachamwell	Family Service
	11.00 am	Wereham	Morning Prayer
27th January	10.30 am	Marham (NEW)	Sunday Café (MC)
	09.30 am	Fincham	Holy Communion
	11.00 am	Boughton	Holy Communion
	5.00 pm	Marham	Evensong (HT)*
	6.00 pm	Barton Bendish	Holy Communion

*note change of time.

THURSDAY COMMUNIONS

3rd, 17th & 24th at Fincham, 31st & 10th at Boughton.

Services at 10:00 am followed by tea/coffee. All Welcome

CHURCHWARDENS

Barton Bendish:	Mhari Blanchfield	01366 347849
	Linda Webster	01366 347563
Beachamwell	John Sanderson	01366 328818
	Graham Williams	01366 328774
Boughton	Pam Wakeling	01366 500429
Wereham	Sheila Smith	01366858165

**All Services
subject to
change at short
notice.**

**Please contact
your
Church Warden**

BAPTISMS AND WEDDINGS

Please contact the Rev'd. Barbara Burton 01366 348079 or the Churchwarden in your parish.

COMMUNITY NOTICE BOARD JANUARY

MOBILE LIBRARY VISITS - Please note changed days/times

DATE	VILLAGE	LOCATION	TIME
Thursday January 17th	Barton Bendish	Hatherley gardens	9.40am
	Beachamwell	Post Office	10:05 am
	Drymere	Telephone Box	10:40 am
	Boughton	Sycamore House	15:20 pm
		Mill Road	15:35 pm
Thursday January 3rd, 17th and 31st	Wereham	The Pond	9:30 am
		Queen's Close	16:20 pm

For services to all 'Group 4' villages ring Mobile Library Information on 01603 222267 or look at the website - www.norfolk.gov.uk/Leisure_and_culture/Libraries/Mobile_libraries

VILLAGE BUS SERVICES

FROM	ROUTE	OPERATOR	DESTINATION
Barton Bendish	31 (Saturday)	Lewis Coaches	Swaffham
Beachamwell	31 (Saturday) 18 (Tuesday)	Lewis Coaches Eagles Coaches	Swaffham King's.Lynn & Swaffham
Boughton	18 (Tuesday)	Eagles Coaches	King's.Lynn & Swaffham
Wereham	28 (Mon to Sat) 40 (Mon to Sat)	Coach Services Coach Services	King's Lynn Thetford/Downham

Timetable requests:- (01603) 228888, Traveline (08706) 082608 (www.traveline.org.uk)

FARMERS' MARKETS

Ely	Second and Fourth Saturday 8:00-2:00pm (12th and 26th)
Fakenham	Fourth Saturday 8.30am to 12:00pm (26th)
RAF Marham	Third Friday 9:00am to 2:00pm (18th)
Swaffham	First and Third Sunday (6th and 20th)
Watton	Sadly no longer trading

For information:- www.farmersmarkets.net or your local Tourist Information Office

VILLAGE AND PARISH HALL BOOKINGS

Barton Bendish	Bill Tasker	01366 347432
Beachamwell	Caroline Sanderson	01366 328244
Boughton	Pam Wakeling	01366 500429
Wereham	Doreen Rolph	01366 500218

BOUGHTON VILLAGE NEWS

All Saints' Church

It is hoped to have the refurbished East Window in place before Christmas. It will be good to have it in time for the services at Christmas and anything else that takes place as the days begin to lengthen - what a joyous thought!

The annual Nine Lessons and Carols service will take place on Tuesday 18th December at 7 pm. We listen to the story of Christmas read by familiar voices and sing the familiar carols. Everyone is welcome. On Christmas Eve, the now traditional Crib service will take place, led by Pippa and friends. If you have access to a donkey, I know they will be glad to hear from you. Our old donkey, Star, has done so well that he has been booked to appear nearer his home in Suffolk, so we need another donkey to take his place!

For the first time in many years, there is no service at Boughton on Christmas Day itself - we simply don't have enough clergy to take eight services throughout the benefice on one day. Instead there are three midnight services - Wereham, Fincham and Marham - with morning services at Beachamwell and Shouldham Thorpe. I hope everyone will find a time and place that suits their Christmas timetable.

The service of Remembrance was well attended, with wreaths laid on behalf of the village by Peter Agate and Ivor Tidy. Tony Gold read the names of the men from Boughton who died in both world wars. One of them is buried in the churchyard. We were sorry that Frank Reid was unable to attend because he had been taken to hospital the day before and warm wishes for his speedy recovery were sent from all those present.

After the service, some thirty people sat down to a magnificent Sunday lunch organised again by Sandy and her team. Good to see Marion is now living close by - working hard as usual and being pressed to read a lesson in the service! We wish her many years of happiness in her new home. It was such a good lunch that no one wished to go home, even when the tablecloths were removed from under their elbows!

Next month the second Sunday in the month will be well into the time of Christmas preparations, family affairs and general business, so there will be no Breakfast Church. However, there will be a short and fairly informal service at 10 am, followed by coffee and refreshments - someone promised to make cupcakes. Please come along as usual and join in both the service and the fellowship. Breakfast Church will resume in January. Many thanks again to those who work so hard to prepare for it. **Pam Wakeling**

BOUGHTON VILLAGE NEWS

What is it a Terrapin or a Turtle?

Many residents of Boughton may have heard of the creature that is supposed to live in the pond but is it real and what is it?



Well here is a picture I took about four years ago when the creature was sunning itself on the pond overflow one sunny day.

Now you might think that such an animal would not be able to survive

through some of the harsh winters we have had over the last couple of years. However I can tell you that our resident is alive and well as I watched him swim across the pond, bobbing his head above the surface to breathe every few yards, just a few short weeks ago. It looked like a submarine just under the surface as it made its way across the pond. Of course it is much larger now and is probably 30cm long (1 foot in old money) by now.

So how did it get in the pond? Local rumour has it that a resident who was moving from the village turned the contents of his fish tank into the pond. Whatever the truth, it has been there for at least six years and seems to be thriving. It has had a close shave at least once though as a man fishing caught it a year or so ago but returned it to the pond.

So, what is it? Any ideas? We would love to know. **Peter Agate**

BOUGHTON VILLAGE NEWS

Christmas Letter from New Zealand.

To all those who remember us we'd like to say Happy Christmas. We are both enjoying it in Auckland and settled well into our jobs. It makes a change being in a city and having access to buses, green areas and theatre all at the same time. We have done a little travelling and hope to get to Australia next year as well as Fiji or one of the Pacific islands. The shops like UK have had all the stuff in them from November and been playing Christmas songs for ages. The difference is that it is sunny. The plants are blooming, the trees are in blossom, the fruit is on the trees and I will be starting my school summer holidays soon after you read this. This makes it become real that we are living in a different place. So we raise a glass as we sit on the deck and say Happy Christmas and all the best for 2013. ***Moir and Steve Saunders***

Boughton School



For those who were confused about the piece on Boughton School last month, here is the missing photo. Recognise anyone? ***Peter Agate 01366 500044***

BOUGHTON VILLAGE NEWS

Boughton Fen

Report to Parish Council Meeting 09.11.2012

Since my last report, many things have happened on and around the fen.

We have purchased our new cutter which is being used by our team of volunteers to keep the walk trimmed and looking good. They will probably be able to leave it now until the new spring growth begins.

The interpretation signs have arrived, and we hope to start putting them up on the fen this weekend (10.11.12), and the new sign in the playground in the next week or two.

The Borough Council Fit Together walkers came to the fen on 17th September, with around a dozen people enjoying the walk.



Marsh Harrier Nest

Photograph - Allan Hale

BOUGHTON VILLAGE NEWS

A number of working parties are planned over the winter months to carry on with fen improvements. We will also be using Community Payback in certain areas. The leaking drain at the bottom of Highland Fen has been removed by Norfolk County Council Highways, so hopefully water loss will be reduced in this area. (Thanks to Highways for this work)

Once the work on the walk has been completed, we should be able to continue preparing our submission to the Planning Inspectorate to fence the two areas of fen for future grazing.

Recently, we met with Natural England and the Environment Agency to discuss water management on the fen, which may result in the EA carrying out some work on Middle Fen to help retain and raise water levels.

Wildlife is continuing to thrive, with large numbers of dragonflies enjoying the late summer sunshine. Late summer also gave us the magnificent sight of up to a dozen marsh harriers coming to roost each evening on both Boughton Fen and neighbouring Brown's Fen.

Finally, we have won an award!

In fact, two. We are to receive a CPRE Norfolk award for Boughton Fen Wildlife Walk. In addition, we are to be the inaugural recipients of the Boldero Award for enabling, enhancing and encouraging access to the countryside. The EDP visited us in connection with this, and prepared an illustrated article on the fen and our awards, resulting in a full page write up on Monday 22nd October 2012.

Thanks go to everyone who has helped us with the walk and other work related to the fen. These awards are not just for the Fen Committee but to all of you who have been involved over the last couple of years.

Anyone who would like to come and join us can contact me on 01366 500461, or mark@pogmore.myzen.co.uk.

Mark Pogmore

[Well done to all concerned - brilliant work. Ed]



WEREHAM VILLAGE NEWS

Bingo

Every Wednesday evening at the Village Hall. Starts at 7.30 pm. Cash prizes. Barbara's famous Christmas Bingo is to be held on Wednesday 5th December. Donations of raffles prizes would be greatly appreciated.

Please contact Barbara, Doreen or Janet.

Karaoke

The George and Dragon - Monday 24th December - starts 8.00 pm.

Wereham on Facebook

To find out what's going on in the village and look at local and event pictures log into Facebook - we are **Wereham Village Group**

Parish Council Meetings

The last meeting was held on Tuesday 13th November at 7.30pm in the Village Hall. If you would like a copy of the Minutes from that meeting, please contact:-

Mrs N E Clifford-Everett (Parish Clerk) on 01366 377799 or write to
33 Lynn Road, Southery, Downham Market, Norfolk PE38 0HU

There will be a meeting in January, date to be announced.

Monday Evening Youth Club

Just to say thank you to all for attending the Village Youth Club on a Monday evening over the past year. We will be closed over the Holidays - and here's wishing you all a MERRY CHRISTMAS and a HAPPY NEW YEAR.

Jacqueline and Nicki

Village Hall

By the time of our next update in the February issue of G4N, we hope to report that we are making progress towards our goal of a new village hall.

In the meantime from all of us on the Committee, thank you for supporting your Village Hall and we wish you a very Merry Christmas and a Happy New Year!

Victoria Gray

Village Hall Committee

The next Committee meeting is set for Tuesday 4th Dec at 19:30.

Jacqueline - Village Hall Secretary

WEREHAM VILLAGE NEWS

Wereham Tots

Anyone wishing to join us will be made very welcome. Just a reminder that we meet on Friday mornings 10.00am to 12.00pm in Wereham Village Hall. 'First visit free' then £1.50 per child (second child or more 50p each). We have a vast array of toys for all ages and tabletop activities. Healthy snacks and juice for the children, plus teas and coffees for the adults (as much as you like)!

Christmas Bazaar

To be held on Sunday 9th December 2.00pm to 4.30pm, in the Village Hall.

There will be Santa in his Grotto, as well as a Cake Stall, Raffle, Tombola and refreshments. Other stalls are available at £5.00 per table. There will be bowling for prizes - a turkey for the adults and sweets for the children. Entry fee for adults 20p, children free.

All proceeds towards Fighting Fund for New Village Hall



Janet 500732 or Doreen 01366 500218

Please support our Village activities - as without you the Hall would not be able to function, we all live in a fantastic little Village with a great community spirit and we have to hold on to that.

Dates are being discussed for another **Barn Dance** in early Feb 2013 - ***watch this space....***



Church Road, Barton Bendish



**Traditional village Inn offering luxury accommodation
and restaurant with AA Rosette**

Open 7 days a week

Real ales, good food and a warm welcome



Open Monday to Saturday

from 12 noon to 11 pm

Sundays from 12 noon to 10 pm

**Locally sourced, home cooked food
served every day**

La Cimbali Viaggi Coffee Machine

**Enjoy our extensive gardens & unique Children's Play Church
Tower, traditional deckchairs, & large multi coloured bean bags**

Free Wifi available in the pub, gardens & rooms

**Come and try out our speciality coffees and chocolate including
Nestle Grand Cru Coffee and Cailler Swiss Chocolate - even more
delicious served with homemade cakes**

**Check out the website for details of all the menus
and the diary of events - www.theberneyarms.co.uk**

or call 01366 347995

Phil, Sue and the team will be happy to help with any enquiries

**Premier
Holiday accommodation
in Wereham
overlooking the pond**

**4* very comfortable, well
equipped 4 bedroomed house
Sleeps 10, 2 bathrooms**

Ideal if you have family or friends visiting

Good discounts available for
Group 4 News readers!

For more details please Tel Debbie
or Ian Rye 01366502083 or
07506689800 or see website
www.wix.com/ryeholidays/theoldschoolhouse

Bed & Breakfast
Rose Cottage

*Downham Road,
Fincham,
Norfolk,
PE33 9HF*

Reasonable Rates 01366 347426



*Featured in Which?
Good Bed &
Breakfast Guide*

K.J.Catering Services

21 Main Road Brookville,
Thetford, Norfolk

**01366 728858
or 07542 923909**

kjcatering@btconnect.com

www.catererssuffolkandnorfolk.com

**Outside Catering
And
Hog Roast &
Bar-B-Q
Specialists**

K.J.Bar Services

**Fully Licensed
for all occasions**

K.J Catering is a
family business based on
quality food and service



BEDINGFELD ARMS

SINCE 1783

OXBOROUGH PE33 9PS



A stone's throw from Oxburgh Hall, a National Trust property

WE ARE OPEN 6 DAYS A WEEK FROM 11am - 11pm

Serving cask ales, fine wines, frothy coffee & exotic teas!

Tuesday 12 - 3 pm & 6 - 9 pm (Bar Menu & Specials board)

Wednesday to Saturday Lunch 12 - 3 pm (Bar Menu) Evening 6 - 9 pm (A La Carte)

SUNDAY LUNCH 12 - 4 pm

(choice of four roasts and other Bar Menu favourites)

Coffee morning from 11am every Wednesday

Senior citizen Fish & Chips every Thursday lunch - £5.95

Monday & Tuesday evening's dine out from the Bar Menu for £10
including main course and glass of wine or beer

Take-away Fish & Chips available Monday to Thursday - £7.50

Hosting a Charity quiz night for QEH Healthy heart campaign –

Sunday 18th November - £3 a ticket

WE ARE ALSO NOW TAKING CHRISTMAS MENU BOOKINGS

BED & BREAKFAST

5 Cosy & tastefully decorated Coach Rooms & 4 individual, feature rooms with village views

For bookings, reservations and enquires please contact us on

01366 328 300 – info@bedingfeldarms.co.uk

www.bedingfeldarms.co.uk

sunday lunch *at* strattons hotel



Sunday Lunch, 3 courses £25, now being served in the **Rustic Restaurant**

Open for dinner every day from 6.30pm

Bookings now being taken for our 3 course **Christmas Party** menu £30

For more information or to book a table call our reception team
or email us at enquiries@strattonshotel.com

4 Ash Close Swaffham Norfolk
Tel 01760 723845 www.strattonshotel.com

South Pickenham Estate FIREWOOD

Barn stored seasoned split hard and
softwood

Free delivery in the Swaffham area
All of our firewood is from well man-
aged woodland and is fully sustainable

Softwood logs are over 40% cheaper
than hardwood logs

Will deliver 50% hardwood and 50%
softwood on one load in separate
sections if required



Contact
The Estate Office
01760 756376
Trailer shown holds
3 cubic meters

FIREWOOD LOGS

**All Dry and Seasoned
Free Delivery
Hardwood or Mixed Loads**

**Call Tim on:
01366 347656
07867 764307**



BRYAN CATER Chimney Sweep

Guild of Master Sweeps certified
Clean and Reliable
Certificates Issued
Fully Insured
Fire Parts Supplied and Fitted

Call Gavin on

01366 728342

**The Poplars, Thetford Rd,
Northwold, Thetford, Norfolk**



ARCADIA

HOME HEATING LTD

WOOD BURNING STOVES & RANGE COOKERS

We stock a wide range of wood burning and multi fuel stoves, cast iron range cookers, fuels and fireside accessories in our showroom.

Showroom Open
Monday-Friday 9am-4pm
Saturday 9am-1pm



01553 661333

www.arcadiahomeheating.co.uk

Hardwick Ind. Est. King's Lynn PE30 4LS



charnwood
EXCEPTIONAL FIRES



RAYBURN
Building a better fire



Domestic Gas Specialist Heating and Plumbing Local Tradesman

- All Gas and Oil Servicing and Breakdowns
- Central Heating Repairs and Installs
- Landlords' Certificates – Gas Safety Certificates
- New Boiler and Full System Installs and Upgrades
- Friendly, local, reliable and efficient
- No Call-Out Fee

Call us today on 07920 423788 / 01366 328458

or email: gasbritannia@hotmail.co.uk



"I called Gas Britannia after being quoted £3,000 for anew boiler to be installed. Robbie did the whole thing for £1,000 less. He was very friendly and helpful." Sarah, Swaffham"

GOT DIRTY WINDOWS? G.COSTIN WINDOW CLEANING

Windows, doors, frames &
sills cleaned as standard.

Gutters, fascias,
conservatories & more.

Reach & Wash
Pure Water System.

Reliable & friendly service.

Other cleaning services now available.

Call Gavin 07796 606607

gcostinwindowcleaning@yahoo.co.uk



Drymere Lodge Boarding Cattery

All New.....

New flooring and new roofs

Freshly painted

Endless water bowls

New litter trays and
fresh bowls every day

Fully heated
Cuddles guaranteed!!

Please come and look
still low rates !!

www.drymerelodgeboardingcattery.co.uk

Call Angela on 01760-723468



**Quality
Service**

**Affordable
Prices**

**Trustworthy
Staff**

**Clean
Home**

**For Quality
Domestic
Cleaning**

Call 01366 384970



www.deftcleaning.co.uk

Jen's Pet Care



Are you at work all day?

Do you need someone to pop in and feed your pet and let it out? Or keep your pet company for an hour? Does your cat need feeding while you're out? Or perhaps your puppy needs socialising during the day?



Contact Jen at Wretton on

07799 733 463

**Pet Sitting - Dog Walking - Home Visits
Livestock Care - Puppy Socialising**



30 years experience
working with animals

Reasonable Pricing - please
ask



Jen's Pet Care - Simply the best

"Petcutz" DOG GROOMER



Small/Medium Dogs
NVQ 2 and 3 qualified
in animal care - dog grooming

From bathing, nails trimming, clipping
and scissoring to hand stripping.

For all your dogs requirements
ask for Rachel on
01366 501152 or 07584 279384

Pet Dog Training

Group classes at
Narborough and Swaffham

call Rebecca on

07906 422432

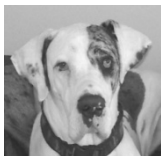
or e-mail via
www.peddarsdogtraining.com

Private lessons, Agility and
other classes available



Bodie's Holiday Home for Dogs

Your dog stays as part of our family



Whether going on holiday or just out for the day
Meet & Greet prior to visit to ensure dogs are happy
& give you peace of mind.

I have a BTEC National Diploma in animal care, 15
years experience working with animals & in
dogcare and I am fully licensed.

01366 501289

07717 559539

[www.facebook.com /](http://www.facebook.com/BodiesHolidayHomeForDogs)
BodiesHolidayHomeForDogs



Maths Tutor (to GCSE level)

- unravel problems
- boost confidence
- improve numeracy

A Cambridge graduate offers
one-to-one tuition in your home
(one-off or ongoing)

£25 per hour

**For details, or to arrange a
£10 INTRODUCTORY SESSION
contact Katherine Shaw
07773 - 433180**

LITTLE OAKS PRE-SCHOOL

AND HOLIDAY CLUB

01366 502150

www.little-oaks-preschool.ik.org



School Term Time:
children aged 2 to 5

Holiday clubs for
2 - 8 year olds

15 hrs a week funded
places for children ages 3
& 4

Places available for
Special Educational
Needs

Tasty hot meals provided



Three trained staff
NVQ2, NVQ3,
BA(Hons)
EYPS awarded

OFSTED Inspected

Open 50 weeks a year

Mums and Tots group:
Tuesday 1.00-3.00pm

*Parent quote: "...it has a
great reputation and being
able to take our son to a
local, well respected pre-
school is fantastic."*



A warm, friendly welcome is waiting for you!

Sessional childcare : Monday to Friday

Pre-School Manager: Debbie Sammons, 47 Wretton Road, Stoke Ferry, 01366 502150

Email: littleoakspreschool2002@yahoo.com

Methwold Nursery School and Pre-School

Experience for yourself the welcoming atmosphere of our nursery where exceptional care, homely surroundings and wonderful large garden are second to none. Our highly qualified experienced staff will ensure that each child's individual needs are met and provide them with the opportunity to make new friends, develop in confidence and become independent whilst **learning through play!**

**Open all year Monday to Friday 7am to 6pm
from age 3 months to 6 years**

Breakfast, After School and Holiday Clubs up to the age of 6
570 hours of Free Child Care* for all children residing in Norfolk/Suffolk
over the age of 3 and 4 years. Child Care Vouchers Accepted

Visit our website to view 'The Tardis' and learn more about us!

www.methwoldnurseryschool.co.uk

39 Stoke Road, Methwold, Thetford IP26 4PE Tel: 01366 728419

**Subject to Local Authority Terms and Conditions*

NATIONAL TRUST
Oxburgh Hall
Tel: 01366 328258

December

Every Wednesday
14 November – 19 December
12noon – 2.30pm

Beat the Rush!

Come and enjoy a roast lunch in the tea-room for £9.95 and do your Christmas shopping in the National Trust shop in peaceful surroundings.

Booking essential on 01366 328243
(Catering only)

Thursday 6 December
10am – 4pm

Festive Foliage Workshop

Create your own natural decoration to take home for Christmas.

Please bring an apron and secateurs.

Coffee on arrival, light lunch and afternoon tea included.

£30 (all materials provided)
Booking essential

Friday 7 & Saturday 8 December
10am – 4pm

Wreath-making Workshop

Enjoy a festive day making your own holly wreath with the expert help of the former Head Gardener.

Morning coffee, light lunch and afternoon tea included.

Please bring apron & secateurs.

£30 (all materials provided)
Booking essential

MEET SANTA IN HIS GROTTO

Sat 8 - Sun 9th December
Sat 15 - Sun 16 December
11am – 4pm
£4 per child
(includes present)



Father Christmas



will be at
Church Farm
every Thursday,
Friday, Saturday
and Sunday from
1st - 23rd December
10am - 5pm

Christmas Shopping at Church Farm. Come and browse our beautiful range of Christmas gifts for all the family. You may even find a few things to put on your own Wish List!



01366 382162

www.churchfarmstowbardolph.co.uk



NEALS YARD ORGANIC REMEDIES

If you have used NYR you will know the quality that our products and company gives each Individual. If you would like to purchase, re-order, enquire, try a sample or hold a Pamper Event - please contact your Local Consultant

JACQUELINE

07825 021488 / 01366 500880

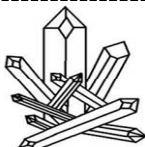
Fantastic ethical products that
No-body Can be without

JACQUELINEBUTCHERNYR@HOTMAIL.CO.UK

CRYSTAL HEALING THERAPY & REIKI

*Complementary Therapies
that can enhance your life –
why put up with that pain
or stress?*

**Both therapies can assist
in reducing pain, the side
effects of medication &
improving everyday life.**



Advice or
Home Visits:
07769662697

To book an appointment:
Downham Market
Complementary Health Clinic
93 Lynn Road. PE38 9QE
(01366) 383840

Karen Taylor is a Practitioner member of PaCT
www.crystaltherapists.org.uk

Charlotte Rose LicAc, VTCT

Aromatherapy Massage
Acupuncture
Facial Cosmetic Acupuncture
Acupuncture for Pain
Hot Stone Massage
**Clinics in Wereham and Old Red
Lion, Castle Acre**
20 minutes aromatherapy
massage taster £5
Gift vouchers available

Contact: Charlotte: 07855 513199
01366 501232

charlotterose.charlotterose@gmail.com

www.charlotte-acupuncture.co.uk



Physiotherapy

**Do you suffer from pain, immobility or
joint problems? You could benefit from
Physiotherapy.**

I am a State Registered Physiotherapist with over 9 years
NHS experience in treating problems such as Arthritis,
Osteoporosis, joint pain, poor balance, joint replacement
recovery, fractured/broken bones, walking difficulties, falls
and neurological conditions such as Stroke, Parkinson's
and Multiple Sclerosis.

I can help to maintain and / or improve your quality of life
through regular physiotherapy; with short and long-term
treatment plans provided.

Please call for more information and to discuss your
particular needs and treatment options.

Available evenings and weekends for treatment in your
own home.

Michael Cooper BSc, MSc, MCSP
(Member of the Chartered Society of Physiotherapy)

Tel: 01366 500527

DOWNHAM HYPNOTHERAPY

Can help with -
Weight Loss and control
Smoking cessation
Anxiety/Depression
Phobias

...and many other problems

To discuss further in confidence
please phone Vivienne on

01366-383277

or go to

www.downhamhypnotherapy.co.uk

Cognitive Behaviour Therapy, Counselling and EMDR

Do you suffer from:

- Anxiety
- Depression
- PTSD
- OCD
- Phobias
- Relationship Difficulties
- Self Esteem Problems
- Problems At Work
- Lack Of Direction
- Addictions



Then Cognitive behaviour therapy or EMDR may help. Both are recognised as successful treatments by the NHS

For more information or an appointment contact:

Rebecca Judge RNMH, BSc, MSc, MAREBT, BABCP

EMDR & Psychotherapist on:

Tel: 01366 320782 Mob: 07530 928070

Email: enquiries@cbtnorfolk.co.uk

Web: www.cbtnorfolk.co.uk

'The Wish' Hair & Beauty

Designed for you! The Client.

Priced for you! The Client.

We offer the finest service in

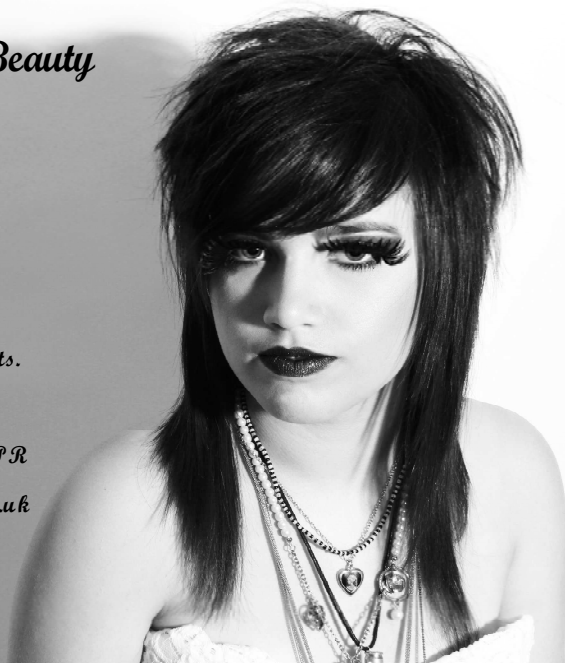
Hair Design, Beauty Treatments,

Nail Treatments, Holistic Treatments.

83 Lynn Rd, King's Lynn, PE30 4PR

01553-769891 www.thewishsalon.co.uk

As seen in Vogue magazine



NO MEAN FEET

CENTRAL TO THE GROUP 4 AREA
FOOT CARE IN YOUR OWN HOME



- ✓ **Nail Cutting**
- ✓ **Corns Removed**
- ✓ **Hard & Dry Skin Removal**
- ✓ **Cracked Heels Treated**
- ✓ **Callous Reduced**
- ✓ **Verrucae Management**
- ✓ **Ingrowing Toenails**
- ✓ **Infection Management Discussed**
- ✓ **Advice and Care for Clients with Diabetes**

Evening, Daytime and Weekend Appointments Available.

As you would expect, each and every client is treated with a sterilised set of instruments and full insurance is in place.

For The Best Feet In The Street

Call Steve on 07837 506 906

Steve Jones MBE, SAC Dip (Adv.), FHP, FHPP, FHPT
Member, The Volitional Register of Foot Care Practitioners.

Beauty in the Garden

*Organic Beauty Treatments &
Neals Yard Remedies Organic Consultant*

Lois Howard CIDESCO, CIBTAC, VTCT

Over 25 years experience

Telephone **07984209673**

Your local health food store & natural therapy centre

- Gluten free, vegan and sugar free foods
- Nuts, grains, seeds and cereals
- Quality vitamins & supplements
- Full range of Ecover cleaning products
- Natural bodycare and baby care sections
- Full range of treatments from Acupuncture to Homoeopathy in our natural therapy centre

Everything you need for healthy living!

greenparrot



Montpelier House, Market Place, Swaffham, tel. **01760 724704**

www.green-parrot.co.uk



All abilities welcome

Stretching, postures and breathing help to improve mobility and strength.

Please wear loose clothing and bring a warm rug and/or yoga mat

British Wheel of
Yoga Tutor,
Ann Lewing
Contact number:
01366 328350

STOKE FERRY VILLAGE HALL

Mondays
7.00pm—8.30pm
Please arrive no
later than 6.55pm

£5.00 per session
(pay as you go)
Under 18 yrs old must
be accompanied by an
adult

Michelle's Foot Care

Day, Evening & Saturday Appointments
Home Visiting

FOOT HEALTH PRACTITIONER

07723 427844

01760 755314

Corns – Callous – Verruca - Ingrown Nails
Thickened Nails - Fungal Nails - Diabetic
Trained – Many other Foot Problems

Fully Insured

Qualified: MCFHP MAFHP

Enhanced CRB

All instruments sterilized

*Registered Member of the British Association
of Foot Health Professionals*

JET ACCOUNTANCY & BOOKKEEPING SERVICES

**Professional and qualified
service offering:**

- ◆ Accounts
- ◆ Bookkeeping
- ◆ Self Assessment
- ◆ VAT Returns
- ◆ Payroll
- ◆ CIS Returns

Tel: Louise Scott (MAAT)

07806 792211

info@jetaccountancy.co.uk

M.M.A. BOOK-KEEPING AND ACCOUNTANCY

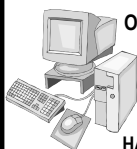
Chartered Management Accountant

- ❖ Tax Returns
- ❖ VAT Returns
- ❖ Self Build VAT Claims
- ❖ Monthly Management
Accounts Preparation
- ❖ Sage, Excel and Manual
Systems Advice
- ❖ Computerisation of
Records
- ❖ Home/On Site Visits
Available

Call Keith Matthews (ACMA)

01366 347848 / 07818 438066

SYSTEMS BUILT TO SPECIFICATION
MOTHERBOARD REPAIR
OPERATING SYSTEMS INSTALLED OR
RE-INSTALLED
WEB DESIGN / AD DESIGN
VIRUS REMOVAL
HARDWARE INSTALLATION & REMOVAL
LAPTOP & PC REPAIR



PC REPAIRS + UPGRADES

I AM BASED AT COCKLEY CLEY & WILL TRAVEL
FREE OF CHARGE WITHIN 15 MILE RADIUS
FREE PC COLLECTION-RETURN SERVICE

E-MAIL: pc-probs@hotmail.com

TEL-01760-725647

ASK FOR IAN



THE TEKKIE

PC AND NETWORK ENGINEER

- PC repairs & upgrades.
- Viruses & malware removed.
- Internet problems resolved.
- Wireless Networking.
- Data recovery.
- Quality PCs built to order.
- Microsoft systems specialist.
- On-site support.

Call: Joe Trattle 01366 347304 or 07760 118804

Web: <http://www.thetekkie.co.uk>

Email: joe@thetekkie.co.uk

Microsoft
CERTIFIED
Systems Engineer



PR Bowers & Son

Funeral Directors (Est 1921)

Anmer Cottage Methwold Road Northwold IP26 5LN

01366 727432

07796 780270

Private Chapels of Rest ~ 24 Hour Service
Upholding Traditional Family Values Of
Dignity & Respect For Your Loved Ones



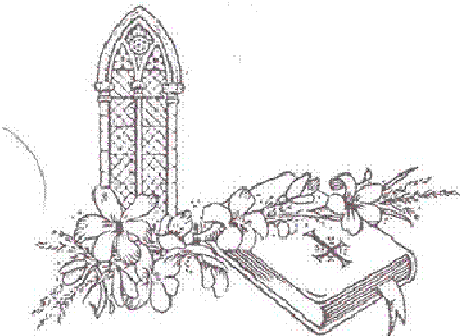
Privileged To Serve Families In The Area For 3 Generations

Family Funeral Directors ***R. H. BOND*** ***STOKE FERRY***

Formerly G.P. Riches & Son
Still family owned and now run by the
5th Generation
Est. 1872

Offering a Complete Funeral Service
24 hours a day, to all areas

Salisbury House
Lynn Rd
Stoke Ferry
PE33 9SW
Tel: 01366 500241
Mobile: 07861 671325



Help and
understanding
when you need it
most

Peckhams Plumbing

**John Peckham Friendly local
Plumbing and heating
engineer**



**All Work
Undertaken
Big Or Small**

**Fully Qualified
and
Insured**

**No Estimates
Just 1 Price**



**No Call
Out Fees**

- ✓ **Full Heating Systems**
- ✓ **Heating system updates**
 - ✓ **Radiator changes**
 - ✓ **Oil Tank changes**
- ✓ **Fully Fitted Bathrooms**
 - ✓ **Leaks And Repairs**
 - ✓ **Tiling**
- ✓ **Boiler replacements & repairs**
 - ✓ **Boiler Services**

**Tel Feltwell: 01842 850576
Mobile: 07534892411**

WJA TILING

The Complete Wall and Floor Service

**Ceramics, Porcelain, Mosaic
and Natural Stone
Under floor heating and Karndean**

**No job too big or small
All Work Guaranteed
15 years experience**

**For a free quote, measure up
or advice
Phone Will on: 07884 446257**

NORTHWOLD TILE CENTRE

Retailers of wall & floor tiles



**Established 23 years
Expert fixing service**

**SPECIAL OFFERS ALWAYS
AVAILABLE ON SELECTED TILES**

Opening times:
Mon - Fri 9am - 1pm, 2.15pm - 5pm
Sat: 9am - 5pm, Sun - Closed
The Old Chapel, High Street,
Northwold, Thetford, IP26 5NF.

Tel/Fax: 01366 728325

**NEW for 2011
MULTI-FUEL/WOODBURNING
STOVES**

Eco Window & Door Company

- > Windows
- > Doors
- > Conservatories
- > Porches
- > Carports
- > Garage Doors
- > Fascia
- > Guttering

27 years in the industry

Friendly family business (No pushy salesmen)

I sell it, I fit it, and I guarantee it!

All work Guaranteed & Insurance Backed Inc Deposits

Call Jason on 01362 853242 or 07718 080778

Email ecowadc@hotmail.co.uk



We also repair all makes of windows and doors !
How about replacing your existing glass for energy A rated Glass and start saving on those heating bills?

certass
Quality & Evaluation for Construction
APPROVED INSTALLER

Doubledays Waste Disposal

Doubledays can assist with all waste problems, from domestic septictanks and treatment plants to commercial/ industrial liquid waste, interceptors and gulleys. We also rod-out or jet blocked drains. Portaloo and Skip Hire also available

We offer a no obligation, **FREE** quote for the following:-

- ♦ Installation of new septic tanks and soakaways
- ♦ Repairs to damaged drains and pipe work



Look out for our Logo 'You make it – we take it'

Telephone: 01366 500217
01945 773757

We take most major credit and debit cards, cheques and cash

Check out our facebook page to find out more about us and any special offers in your area

RAY GRIBBLE

Antique Restoration & Traditional Upholstery

All aspects of antique furniture
restoration, including French
polishing, cabinet repairs and
traditional upholstery

Traditional Upholstered Furniture

Footstools, Sofas and Chairs
made to commission

Picture Framing & Mirrors

** VISIT THE NEW WEBSITE **

www.raygribble.co.uk

Vine House, Church Road, Wereham

01366 500 387

Poppi Interiors

Fabrics, furnishings & Interiors



Made to Measure Curtains, Blinds & more
Fabrics, Wallpapers, Poles & Trimmings
Free Measure & Quote 01366 348033
poppiinteriors@aol.co.uk

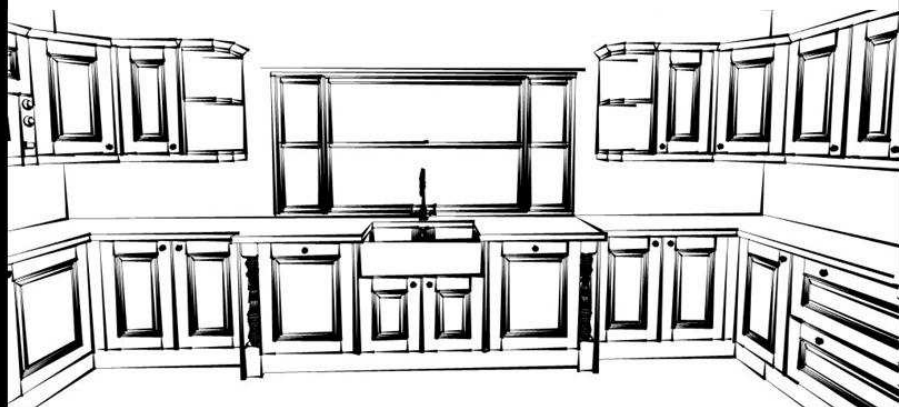
PAUL FARRAR GENERAL PLUMBING SERVICES

ALL ASPECTS OF
PLUMBING UNDERTAKEN,
INCLUDING
MAINTENANCE AND
REPAIRS

AT COMPETITIVE PRICES

**PHONE 01366 328072
OR 07725 300624**

Create your new look with newrooms.



From inspiration to installation we take care of everything
transforming your Kitchen, Bathroom, Bedroom
In to the room you always dreamt of.

For your free consultation call now on 01366 727417
Visit newroomsdesign.co.uk

or see our showroom at The Workshops, Brandon road
Methwold, Norfolk, IP26 4RH

newrooms 
discover a new level of service



newroomsdesign



newroomskitchens

Historic Property Maintenance

Repairs to Brick and Stonework - Masonry repairs - Letter cutting -
House signs - Traditional plaster - Lime mortars made for clients -
Lime washes - Conservation - Restoration - Re-pointing -
Memorials - Gravestones

Mr Jack M Rolfe
Stone Conservator

CSCS Carded
Specialist in the repair of
historic buildings & monuments

J M Rolfe
CONSERVATION
Tel: 07827608216

www.jmrolfeconservationnorfolk.co.uk
3 Malthouse Row, Wreham, Norfolk

Your Local Craftsman

**Now Autumn's here it's
time to prepare your
garden for winter**

Are you in need of getting your garden ready for winter?
We can provide lawn care, cutting, scarification, aeration
or rotovate a new bed ready for planting. Light hedge
cutting, pruning and general tidy up.

We can also redesign your garden
and provide plans, planting
layout, and organise
construction. Whatever
your gardening needs,
We can help.
References available.

**Just the JOB
Gardening**

Call Jamie on
07880948203
Or Jacque on
07919371994
for a chat or quote



CARPENTER

**For all types of
Carpentry work**

Renovations and Repairs

Cupboards and Shelves

**Doors and Windows made/
fitted**

**Also bespoke handmade
furniture**

Call Terry Duncombe
01366 328608

D W Savage

“Carpenter/Builder”

25 years Experience

For all your building requirements

Kitchens, Bathrooms supplied and

Fitted or just labour

Conservatory, fascias, guttering

Laminate or Oak flooring

Chimney repairs

Patios, Decking etc.

Car Ports

Extensions

All roof systems

All Carpentry works undertaken

Renovations

Ask for Darryl

Telephone 01366 501152

Mobile 07884373315




HANDYPERSON SERVICE



Care & repair

**A COUNCIL SERVICE FOR HOME
MAINTENANCE & MINOR ADAPTATIONS**

MINOR ELECTRICAL, INTERNAL & EXTERNAL WORK, PLUMBING
SPECIALIST SERVICE FOR ADAPTATIONS FOR THE ELDERLY & DISABLED

**FOR MORE INFORMATION CALL
US ON 01553 616371**

A J Restoration

Architectural Stonemason Specialist

Traditional techniques used in restoration of brickwork and stone.
Lime mortar repairs. Shelter coating. Stone cleaning. Repointing.

New stonework. Brickwork and chimney repairs. CSCS carded



Tel 01362 687176

Mob 07877816145

email aj.restoration@yahoo.co.uk

7, Station Drive, Gt Fransham, Dereham, NR19 2JD

ADE HARDY GARDENING SERVICES

For all your gardening needs

Garden Clearances

Mowing and Strimming

Hedge Cutting

Tree Work

Fencing

General Garden Maintenance

Winter tidy ups



**To discuss your requirements
please call Ade on**



**01366 328941 or
07798 785663**

**No job too large or too small to
be considered**



Garden Services John Adcock

For conifer, shrub
and hedge trimming

Garden Maintenance
and winter 'tidy ups'

Grass Cutting for large or small lawns

New fencing erected
or old fencing repaired

Mulch and Chippings available
Power Washing

Tel: 01760 337058 or 07909 785801
Fully Insured

Seb Chaplin Garden Services

All aspects of Garden and Ground
Maintenance undertaken including:

Lawn care

Tree and Shrub Pruning

Hedge Cutting

Landscaping

Ring for more details
and a free quotation

01366 727041
07733210151

emmaandseb@hotmail.co.uk



Tim's Tree Services



Pruning
Topping
Felling
Clearing

All aspects of tree and hedge
work undertaken



Over 30 years
experience



Qualified - Insured

Call 01366 347656

or 07867 764307

For your free quote

LOCAL MAN - LOCAL RATES

D.J.B. LANDSCAPING

: Driveways : Paving : Fencing :
: Garden Clearance :
: Hedge Maintenance :
: Grass Cutting / strimming :
: Building Repairs / Maintenance :
: Concreting :

All jobs considered

David Bennett

Mobile 07795 833440

Fakenham 01328 700859



NORTHWOLD ROCKERY STONE

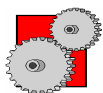
@ BRYAN CATERS

Suppliers of Natural Stone Paving,
Circles, Setts, Rockery Stone, Cobbles,
Pebbles and much more.

Check Out Our Prices!

www.bryancater.co.uk

The Poplars, Thetford Road, Northwold, Thetford,
Norfolk IP26 5LW. Tel: 01366 728342



P.G.M.S.

**Fabrication of a
variety of metals
Mechanical engineering**

Sparex *Agricultural
spares & accessories*

Peter Garner

Mechanical Services

Shingham Lane, Beachamwell,
Swaffham, Norfolk. PE37 8AY.

Tel: 01366 328823

E-mail: pgms@lineone.net

FENLAND GARAGE DOORS

The area's most
comprehensive range of
manual and automatic doors.
Plus repairs to all doors
and spares

PROUD TO SAY MORE THAN HALF
OUR NEW CUSTOMERS COME TO
US BY RECOMMENDATION

Swaffham 01760 790 009
Bexwell Showroom 01366 382815

www.fenlandgaragedoors.co.uk

ARCADIA

HOME HEATING LTD

WOOD BURNING STOVES & RANGE COOKERS



01553 661333

www.arcadiahomeheating.co.uk

Hardwick Ind. Est. King's Lynn PE30 4LS

MHS SERVICES

For all your Plumbing, Electrical
and Building maintenance work

40 years in trade
Electrical certificates supplied
to BS7671



Call Mike
Shaw on



**07776 154474 or
01760 336739**

No job too small
Free estimates



Paul Braybrooke
Oil Fired Boiler Engineer
Boiler Servicing
Breakdown Service

Commissions
Tank Replacements

Phone 01353 777788
07946 735691

M.B. Roofing

Complete Re-Roof
UPVC Facias
Leadwork
Guttering
Repairs
Re-Pointing
Bird Proofing
Roof Cleaning
Chimney Rebuild
Dry Verge System



01760 725047

07979 811260



mb-roofing.co.uk

CHILDREN'S PAGE

Christmas Word Search

Words may go vertically and horizontally in either direction only

S	R	G	H	K	Q	D	W	A	F	P	D	X	C	X	M
N	A	F	R	T	Y	O	J	B	G	N	G	D	C	V	I
C	G	N	J	K	K	L	S	B	C	I	Z	C	B	N	N
H	M	B	T	F	D	H	J	A	K	K	Y	G	C	Y	C
R	Q	W	E	A	T	Y	R	I	O	C	P	L	U	U	E
I	F	G	H	J	C	D	K	L	Q	O	D	F	G	H	P
S	N	B	V	B	S	L	H	J	K	T	W	D	C	G	I
T	H	Y	F	C	V	G	A	H	K	S	T	I	R	T	E
M	D	F	V	B	N	M	T	U	F	G	U	Y	Y	U	S
A	W	S	D	C	A	R	O	L	S	E	R	V	I	C	E
S	T	N	E	S	E	R	P	T	Y	U	K	H	J	H	N
T	U	I	H	J	N	F	V	C	V	B	E	U	Y	U	G
R	H	O	L	L	Y	A	N	D	I	V	Y	W	S	R	S
E	H	U	I	M	B	N	M	F	T	C	X	F	C	C	A
E	O	T	E	L	T	S	I	M	M	T	U	I	O	H	X
S	D	N	E	I	R	F	D	N	A	Y	L	I	M	A	F

SANTA CLAUS
MINCEPIES
CAROL SERVICE
CHRISTMAS TREE
PRESENTS
TURKEY

MISTLETOE
CHURCH
HOLLY AND IVY
CARDS
STOCKING
FAMILY AND FRIENDS



1. Jingle Bells	2. Walking in a Winter Wonderland	3. Here comes Santa Claus	4. Joy to the World
5. Rudolph the Red Nose Reindeer	6. O Come all ye faithful	7. I'm Dreaming of a White Christmas	8. O Christmas Tree
9. What Child is This?	10. We Three Kings of Orient are...	11. Deck the Halls	12. I Saw Three Ships
13. O Holy Night	14. Noel, Noel, Noel	15. Away in a manger	16. Twelve days of Christmas
17. I Saw Mummy	18. All I Want for Christmas is my Two Front Teeth	19. Chestnuts Roasting on an Open Fire	20. It Came Upon a Midnight Clear
21. Let it Snow	22. Silent Night, Holy Night	23. O Little Town of Bethlehem	24. Silver Bells



**Saint John's Way
Saint John's Business Estate
Downham Market
Norfolk
PE38 0QQ**

Easy access, ample on-site parking, dedicated sterile operating theatre, dedicated dental suite, separate dog and cat wards, isolation ward, all staff and facilities on one site, x-ray suite, in-house laboratory, ultrasound facilities, Pet Passport, export services and 24 hour nursing cover.

A Personal and Professional service that our existing clients are accustomed to. We warmly welcome new clients who wish to register with us.

As part of our aim to give something back to the community we recently purchased a full set of match shirts for the Swaffham under 9's rugby team. We hope to extend this to other age groups in the future. Now the quality of the shirts can match the quality of the rugby!

**01366 382219
www.crossingsvets.co.uk**

Our surgery times are listed below. Please note that appointments are now necessary for all evening surgeries.

Open surgeries

Monday to Friday	9-10am
Saturday	10-11.30am

**All other consultations will be by appointment only
so please ring in advance**

info@crossingsvets.co.uk