

The Parishes of Barton Bendish & Eastmoor; Beachamwell, Shingham & Drymere;
Boughton; Wereham

May 2019

Cover Illustration drawn by Mark Powell, Beachamwell ©

WELCOME



Hopefully you will enjoy this latest edition of G4N.

Once again, there are so many events taking place in the villages and surrounding area we are spoilt for choice.

If you are able to attend any of those advertised the organisers will be more than pleased and appreciate your support.

'Happy Reading'

Eileen and Pam

The Editorial Team

Thanks to all contributors and apologies to any whose work has not been shown in this issue.

We promise to include your articles wherever and whenever possible. Please do keep them coming.

Many thanks to the distributors, we couldn't do without you!!!

© Copyright Group4 News 2019

GROUP 4 TEAM VILLAGE CONTACTS

Barton Bendish: Jill Mason
Sandmere, Church Rd, Barton Bendish
Tel: 01366 347 928
masons.sandmere@btinternet.com

Beachamwell: Eileen Powell
20 All Saints Way, Beachamwell
Tel: 01366 328 648
powells@beechamwell.plus.com

Boughton: Pam Wakeling
Robet, Mill Hill Road, Boughton
Tel: 01366 500 429
p.wakeling621@btinternet.com

Wereham: Viv Scott
Orchard House, Flegg Green, Wereham
Tel: 01366 500346
vivienne.scott@googlemail.com

Please submit all information through your Village Contacts.

**Deadline for copy for the
June 2019 edition:**

11th May

ADVERTISING

Alan Pickering 16 Tinkers Way,
Downham Market PE38 9TQ

Tel: 07779 787499 or 01366 386125
e:mail: group4news@gmail.com

If you use any of the advertisers in the magazine, please mention where you have seen their advertisement.

WEBSITE www.group4news.co.uk
Kevin Fisher, Tel 01366 502224

‘FROM THE RECTORY’



Rev'd Ken Waters

01366 727220

ken.waters@btinternet.com

The month of May is upon us; with those two wonderful long weekends to look forward to and the fantastic mornings and longer lighter evenings. Will the weather be kind and allow us to sit out and enjoy a meal and drink in the warmer evenings, or will we have to wait a little while longer? Doesn't living in England make life that much more exciting? We know the sun will shine but never when. God gave us this wonderful world and we sometimes barely notice it. When did we last really look at a flower, or the buds coming out on the trees and shrubs? The grass coming back to life? An insect buzzing around? These are all part of our Heavenly Father's creation that he made for us. That is really a powerful statement. He made it for us! So as we go out and about this month let us open our eyes just that little bit more to see what is really out there. My wife's response is "Ants"! She has a phobia against ants, especially as the "little blighters" seem to have decided our house is an ideal location to start their world domination this year. I see her with spray in one hand and powder in the other determined to follow the trail back to their camp and destroy them at source. I find these creatures amazing. They have been around for millions of years according to an article I have recently read, so I don't think the spray and powder will end their existence. I have a live and let live attitude up until I have a little ant just appearing on the edge of my sandwich that I have just taken a bite out of! Mainly because I am aware that where there is one there are a lot more! Where's that spray? I do feel guilty and have to ask for forgiveness when I spray, as God created the ants for a purpose, and I don't believe it was just to annoy my wife. This world and all its creatures (including ants) is a gift that no other gift can surpass. A unique gift that we should look after so that the generations who follow us can enjoy it too. Let all accept that responsibility and do our small part to protect, save and take pleasure in it. Let's go to one of the services and thank Him. Just like this world, St George's Church is your village church, we would love to see you at one of our services – we are quite a friendly bunch and have really posh biscuits and tea/coffee served usually by a really lovely lady (the one who doesn't like ants) after the service.

God Bless,

Ken Waters

BENEFICE NEWS

The Archbishops of Canterbury and York asked for church bells to be tolled or rung on Thursday April 18th in a countrywide show of sympathy after the devastating fire at Notre Dame. Accordingly, the tenor bell at Fincham was tolled for seven minutes.

Villages Open Gardens

If you like looking at gardens, then four Sundays in June have something to look forward to!

2nd Barton Bendish

Liz Stephen 01366 347459

9th Boughton

Pam Wakeling 01366 500429

16th Wereham

Greg Baddock 01366 500233

30th Beachamwell

Brenda East 01366 328811

More details will follow but there are always lunches, teas and plant stalls! Sometimes even a cake stall! If you are able to offer your garden, or any other kind of help, then contact the organisers in your village.



Good
friends
make
bad days
a little
more
bearable.

COUNTRYSIDE NOTES

Peat, sometimes known as turf, is an accumulation of decayed vegetation and is unique to natural areas known as peatlands, bogs, mires, mosses, moors or muskegs. It is acidic and forms in wetland conditions where water logging slows the rate of decomposition by obstructing the flow of oxygen from the atmosphere. Only specific plants can grow in these conditions and although many species of decayed plants can be found in peat, sphagnum moss is by far the most common. The development of peat is a very slow process taking a year to form one millimetre. Most modern peat bogs are thousands of years old and peat banks are often in excess of five feet deep and sometimes as much as twenty feet in parts of the Western Isles. There is evidence that peat was being used to make fire around 1,000BC. Bodies buried in peat bogs are well preserved by the tanning properties of the acidic water.

Us southerners are most familiar with peat either through using it in garden compost or when selecting a whisky of which there are scores of different brands, some tasting strongly of peat. On Islay there are nine distilleries and another nearby on Jura. Ardbeg, Laphroaig and Lagavulin in the south of Islay all have heavily peated flavours. It is not the water used that purveys this taste but the length of time the grains of barley are exposed to peat smoke during the 30 hour drying process. Laphroaig is exposed for 18.

In parts of Ireland and Scotland, particularly on the Islands, peat is still used very much for its traditional purpose as fuel for cooking and heating. In Ireland peat is used to partially run three power stations. Rights to cut peats from an allocated peat bank on the moor are traditionally attached to crofts and some older houses. Access is part of a crofters' tenancy agreement and generations have exercised this right. Although the fuel is free harvesting it is intensively physical, back breaking work and it is customary for families to help each other out. Cutting peats begins in late spring. The top covering of plant growth is peeled back to reveal the thick layer of peat. A special type of long handled spade or peat iron is used to cut rectangular slabs, known as fads, about a foot long, six inches wide and three inches thick. Local blacksmiths often made these spades, known also as tairsgeirs, which have been handed down through generations. It is usually a two person job with one cutting and the other throwing the heavy wet peats up on top of the ground to one side. There it is left to dry for a few weeks. To dry further the peats are often stood on end and built into piles resembling houses of cards, known as rudhan, allowing air to circulate. When thoroughly dried the peats are transported back home and stacked close to the house in a large pile, often in the shape of an upturned boat. **Jill Mason**

RECIPE PAGE

Quiche Lorraine (Gordon and Ivan - Beachamwell)

175g (6oz) plain flour, plus extra for dusting
85g (3oz) hard block margarine or chilled butter, cut into cubes
175g (6oz) unsmoked streaky bacon rashers, rinds removed, cut into strips
1 onion, peeled and chopped
125g (4½ oz) Gruyère cheese, grated
2 large eggs
250ml (9fl oz) single cream
Salt and freshly ground black pepper



First make the pastry: tip the flour into a large mixing bowl. Add the margarine or butter and rub in gently with fingertips until the mixture resembles fine breadcrumbs. Add 3 tablespoons cold water until the pastry comes together in a ball.

Roll out the dough on a lightly floured surface and use it to line a 20cm (8in) loose-bottomed flan tin. Ideally, use a fluted tin.

Chill in the fridge for 30 minutes. Meanwhile, preheat the oven to 220°C. Prick the pastry case all over with a fork, to prevent air bubbles forming during baking. Line the base and sides with baking parchment and weigh it down with baking beans. Place on a baking sheet and bake for 10 minutes. Remove the beans and paper and bake the empty case for a further 10 minutes, or until the base is lightly browned. Trim the overhanging pastry.

Reduce the oven temperature to 180°C. Crisp the bacon in a sauté pan over a medium heat for 10 minutes. Transfer to the cooled pastry case with a slotted spoon. Leave the juices in the pan.

Reduce the oven temperature to 180°C. Crisp the bacon in a sauté pan over a medium heat for 10 minutes. Transfer to the cooled pastry case with a slotted spoon. Leave the juices in the pan.

Place the onion in the pan and cook over a medium heat for 8 minutes or until golden. Add to the quiche lorraine and top with the cheese.

In a bowl, combine the eggs, cream, salt and pepper, then pour into the quiche. Bake for 25-30 minutes until golden and just set. Be careful not to overcook the quiche, or the filling will become tough and full of holes.

This is the Mary Berry recipe Ivan and I used to make a wonderful quiche - Gordon

FIND OUT WHAT MEN REALLY MEAN WHEN THEY SAY

1. I'M GOING FISHING

Means: I'm going to drink myself dangerously stupid and stand by a stream with a stick in my hand, while the fish swim by in complete safety.

2. IT'S A GUY THING

Means: There is no rational thought pattern connected with it and you have no chance at all of making it logical.

3. UH HUH, SURE, HONEY, OR YES, DEAR...

Means: Absolutely nothing. It's a conditioned response.

4. IT WOULD TAKE TOO LONG TO EXPLAIN

Means: I have no idea how it works.

5. TAKE A BREAK HONEY, YOU'RE WORKING TOO HARD.

Means: I can't hear the game over the vacuum cleaner.

6. THAT'S INTERESTING, DEAR.

Means: Are you still talking?

7. OH, DON'T FUSS, I JUST CUT MYSELF, IT'S NO BIG DEAL.

Means: I have actually severed a limb, but will bleed to death before I admit that I'm hurt.

8. HEY, I'VE GOT MY REASONS FOR WHAT I'M DOING.

Means: And I sure hope I think of some pretty soon.

9. I CAN'T FIND IT.

Means: It didn't fall into my outstretched hands, so I'm completely clueless.

10. WHAT DID I DO THIS TIME?

Means: What did you catch me at?

11. I HEARD YOU.

Means: I haven't the foggiest clue what you just said and am hoping desperately that I can fake it well enough so that you don't spend the next three days yelling at me.

12. YOU KNOW I COULD NEVER LOVE ANYONE ELSE

Means: I am used to the way you yell at me, and realize it could be worse.

13. YOU LOOK TERRIFIC

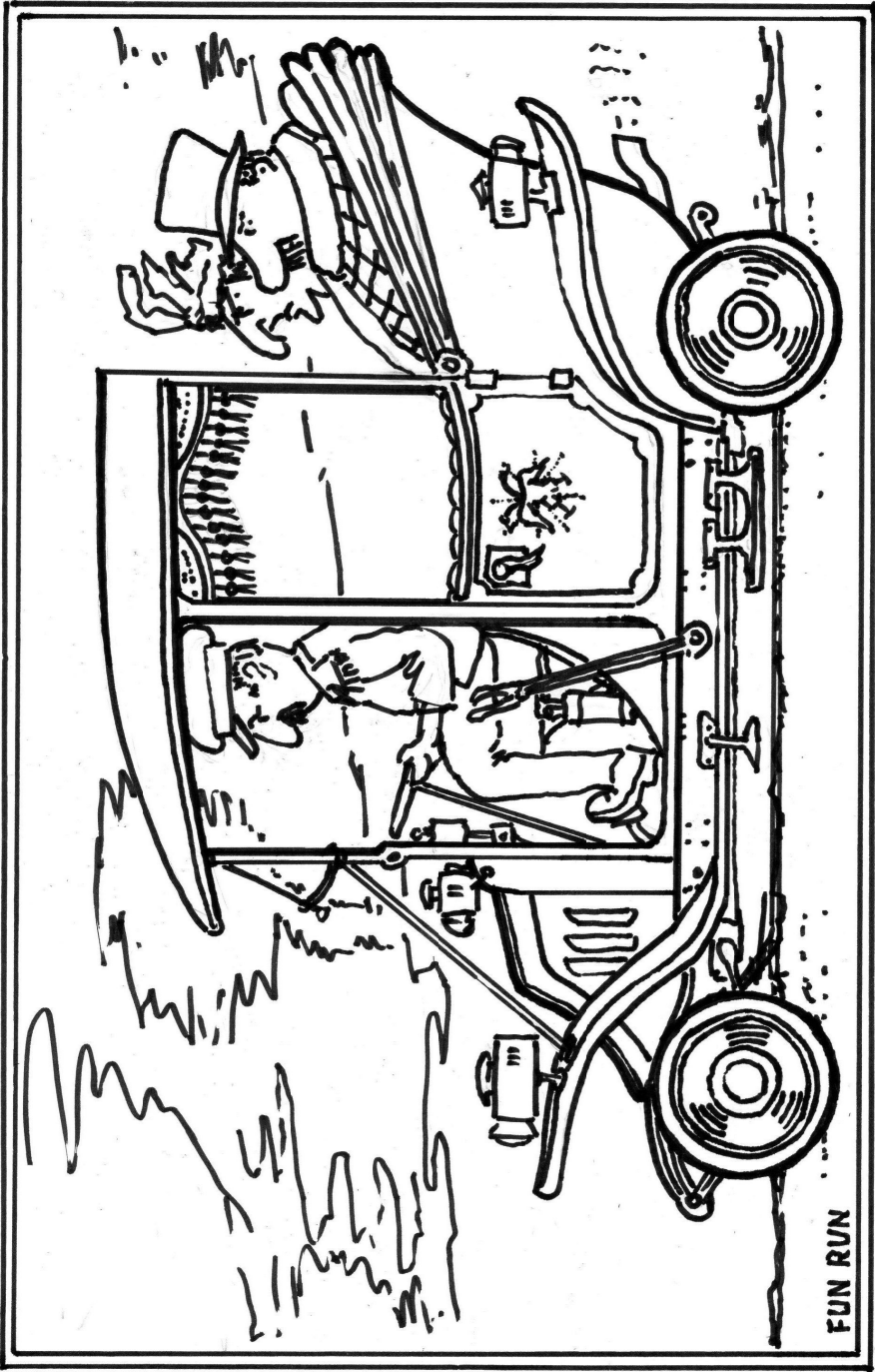
Means: Please don't try on one more outfit, I'm starving.

14. I'M NOT LOST. I KNOW EXACTLY WHERE WE ARE.

Means: No one will ever see us alive again.

15. WE SHARE THE HOUSEWORK

Means: I make the messes, she cleans them up.



QUIZ PAGE

1. Facing the door of 10 Downing Street is no 11 to the right or left?
2. When the Queen was crowned how many children did she have?
3. Name one of the two types of apples crossed to create the Pink Lady variety.
4. Which popular crisp snack features a smiling face with a huge moustache?
5. How many years of marriage do you celebrate on your China Anniversary?
6. The name Steinway and Sons is chiefly associated with the manufacture of which musical instrument?
7. Rearrange OH RULE OUT SIX to identify a BBC TV documentary presenter.
8. If you flew to America's Lone Star State where would you be?
9. How many Prime Ministers did Britain have during the late Queen Mother's lifetime?
10. Where is your trapezium bone?
11. Identify these pop groups - female monarch, with no charge, lawmen, birds and aeroplanes have them.
12. What kind of pet is a Red Self?
13. If someone gave you a piece of applewood what would you do with it?
14. Which top snooker player is known as 'The Nugget'?
15. Actors Brian Cox and Sir Anthony Hopkins both played which infamous character in films?
16. Why do we say older people are getting long in the tooth?
17. Is the Atlantic the world's deepest ocean?
18. Was there ever really a pirate called Captain Kidd?
19. Name the supermarket in TV's 'Coronation Street'.
20. If you visit Fingal's Cave, which Scottish Island are you on?

Answers: (1) Left; (2) Two - Prince Charles and Princess Anne; (3) Golden Delicious or Lady Williams; (4) Pringles; (5) 20 years; (6) Piano; (7) Louis Theroux; (8) Texas; (9) 20, from the Marquess of Salisbury in 1900 to Tony Blair; (10) In your wrist; (11) Queen, Free, The Police, Wings; (12) A long haired cat; (13) Eat it - it's cheese or bacon; (14) Steve Davis; (15) Hannibal Lector; (16) Gums recede making teeth look longer; (17) No - it is the Pacific; (18) Yes - William Kidd was born in Greenock in 1645; (19) Freshcos - formerly Bettabyns; (20) Staffa

LILY HAS CHANGED!

From 1 July 2018, our Lily service expanded to include everyone over 18, not just those in later years.

Lily provides a comprehensive range of support in West Norfolk to combat loneliness and social isolation in adults of all ages. The project is linked to the 'No Lonely Day' initiative and encourages our residents to develop friendships and engage in their local communities.

The Lily online directory lists organisations, services and activities that help people to live healthy, active and independent lives. It includes information relevant to adults of all ages. If you would like your event or organisation to be included in the directory, get in touch asklily.org.uk

Lily Advisors from local charities are available to offer one-to-one support to people at home or in community locations.

Lily has a strong focus on community development, by helping groups to arrange activities and encouraging volunteering and by providing community events, onsite information sessions and support for employers, schools and colleges.

If you, or anyone you know, would like to know how Lily can help, call 01553 616200 and choose option 6.



Tel: 01553 616200
www.asklily.org.uk

**Helping adults in
west Norfolk get
involved in their
community**



in association with



Norfolk County Council

through funding of
King's Lynn &
West Norfolk



2018-0-0

FREE HOME ASSESSMENTS ON OFFER

Older, disabled or vulnerable residents of West Norfolk are being encouraged to book an appointment for a free home assessment from Careline Community Services.

The assessments, which are carried out by a team of qualified staff, will help residents, who may be living with a disability or dementia, or who are simply older and less mobile, to identify concerns in their property which may be affecting their day-to-day life. The assessor, trained by the Disabled Living Foundation, will inspect the home to see whether measures could be introduced that would reduce the possibility of slips, trips and falls and generally make it easier for people to live safely and independently in their own homes. Measures that could be considered include installation of a Careline personal alarm, improved lighting arrangements, heating checks, draught proofing, smoke detectors and easy-to-use taps along with recommendations for other adaptations that may reduce any potential risk to the resident. Practical solutions for those living with dementia are also available, this includes signage or colour differentiation for those who suffer with memory loss and are visually impaired.

The assessors will also be able to advise whether any grant funding is available for any works required.

To book an appointment call the Careline Community Team on 01553 760671

**Every minute,
six people over
65 suffer a fall/**

We're here to help.

To find out more, call us on 01553 616200
or visit www.careline-cs.org.uk



Careline
COMMUNITY SERVICES



**Care &
Repair**

South Coast
King's Lynn &
West Norfolk



ON THE LIGHTER SIDE

Deep thoughts for those who take life way too seriously

1. Save the whales. Collect the whole set.
2. A day without sunshine is like.....night.
3. On the other hand, you have different fingers.
4. Remember, half the people you know are below average.
5. He who laughs last thinks slowest.
6. Depression is merely anger without enthusiasm.
7. Support bacteria. They're the only culture some people have.
8. A clear conscience is usually the sign of a bad memory.
9. How many of you believe in psychokinesis?.....Raise my hand.
10. What's the speed of dark?
11. When everything is coming your way, you're in the wrong lane.
12. Everyone has a photographic memory. Some just don't have film.
13. How much deeper would the ocean be without sponges?
14. What happens if you get scared half to death twice?
15. I couldn't repair your brakes, so I made your horn louder.
16. Why do psychics have to ask you for your name?
17. Inside every older person is a younger person wondering what happened.
18. Just remember - if the world didn't suck, we would all fall off.
19. Change is inevitable, except from a vending machine.
20. Those who live by the sword, get shot by those who don't.
21. Nothing is foolproof to a sufficiently talented fool.
22. The 50-50-90 rule: Anytime you have a 50-50 chance of getting something right, there's a 90% probability you'll get it wrong.
23. If you lined up all the cars in the world end to end, someone would be stupid enough to try to pass them, five or six at a time, on a hill, in the fog.
27. If the shoe fits, get another one just like it.
28. The things that come to those who wait will be the things left by those who got there first.
29. Give a man a fish and he will eat for a day. Teach a man to fish and he will sit in a boat all day, drinking beer.
30. Flashlight: A metal tube used to store dead batteries.
31. The shin bone is a device for finding furniture in a dark room.

SWAFFHAM HERITAGE



Easter approaches, and holidays for children. Wondering what to do during the holiday? Visit us. Swaffham Museum as part of Swaffham Heritage, reopened in February after a very busy six weeks. The closed period saw changes to galleries and to the Tourist Information Centre which is situated in the Museum shop.

Swaffham Heritage's Archaeology Room has been renamed the Monique Slaven Room in honour of the work done by the metal detectorist in the fields of Sporle with Palgrave over almost 30 years.

Monique's hobby brought to light a huge variety of objects from Stone Age flint tools to 20th century military badges and children's toys. One of her proudest moments was uncovering the Mid-Norfolk hoard – a collection of medieval silver coins which is still being added to today by later detectorists. The hoard is unusual in content and experts believe that Sporle was a commerce base during the 14th to 15th centuries.

Monique died last year aged 91 and had been a favourite steward of the museum for many years until shortly before her death. The renaming of the room is a fitting tribute.

In this room we have a large Flint Core – which has a 'face' with eyes and a mouth. We have a monthly competition to name the core, and the winning name for February is 'Cappi'. If you would like to enter a name, then visit us, or see her/him on our website. The prize is a family entry ticket.

Conflict and Consequences – This Gallery looks at the effects of conflict on a small market town and its environs. This gallery has benefitted from a grant from The Heritage Lottery Fund. We have many artefacts, and this room – like all rooms – has activities for children.

Open Mon – Fri 10-4, Sat 10 to 1. A small charge applies, except on Saturdays which are free during 2019.

More information on our website(www.swaffhammuseum.co.uk)

Veronica Hutchby – Publicity Officer

MAGPIE CENTRE

Fancy a Fun Run or a Walk in the Park?



Calling all athletes, fun runners and families who'd like a day out in the country. The Magpie Centre, home of West Norfolk Riding for the Disabled Association, is hosting a Fun Run and Walk, organized by Trinity Rotary Kings Lynn, on Sunday, 2 June at Wallington Hall, South Runcton, PE33 0EP.

This is a great chance for individuals or families to enjoy the fabulous grounds of Wallington Hall at their own pace and there's a choice of a 5 km or 10 km trail, plus refreshments available.

Proceeds will be split between West Norfolk RDA and the Norfolk Accident Rescue Service (NARS). Entries must be received by 27 May. To find out more and to enter, log on to www.trinityrotarykingslynn.co.uk or email trotarykl@gmail.com.

Moving on to future events, might your company/workplace/ be able to help with setting up our Horse Show and Country Craft Fair? We need:

- 1) a team on Wednesday 3 July to put up marquees, knock stake posts in and perform lighter cleaning duties in preparation for the Magpie Open Horse Show on Sunday 7 July.
- 2) a team on Wednesday 14 August to set up for our Craft and Country Fair on Sunday 18 August.

Your team will be sure of a warm welcome and lunch will be provided.

Previous teams have much enjoyed their day and the experience has boosted staff morale significantly. If you'd like to find out more, call our Chairwoman Rosie O'Grady on 01553 500104.

For a more regular role, the Magpie Centre needs volunteers, especially on a Monday, for paddock maintenance duties. If you want an activity that gets you out into the fresh air, while forming part of a friendly team, this one's for you! If you'd like to find out more, even if you are available on other days, call Sarah or Natalie on 01553 810202 for more information.

If Health and Safety's your thing, or you think it might be - we still need a Trustee who is willing to take on that role. Just call Chairwoman Rosie O'Grady on 01553 500104 for an informal chat.

If you need more info or have any queries, please call me on 01553 828935 or email c.dudley@success-in-english.co.uk **Caroline Dudley**

SWAFFHAM & LITCHAM HOME HOSPICE

On the 22nd March we held a successful Quiz at the Conservative Club with 16 teams competing. All teams seemed to have enjoyed themselves and helped us raise £545 for our funds. After 11 rounds of questions, there were only 8 points separating the team who finished fourth from the winners. Our thanks to everybody who took part and those helping with the scoring, selling raffle tickets etc.

May 11th is the date of our annual street collection in Swaffham. We will be collecting from 08.30 to 13.00 at various points around the Market Place. Our thanks in advance to those who will be helping with the collection. If you want to know more about who we are and what we do, then come and talk to us during the morning at our Gazebo which will be on the forecourt of Clenshaw Minns in the Market Place. Alternatively, if you wish to enquire about volunteering, then please ring or call in at our office and ask for Wendy Martin, our co-ordinator. Our address is 17-19 Brocks Road, Swaffham (just up the road from Tesco) – telephone 01760 722937.

Adrian Adcock

WEST NORFOLK AVIATION SOCIETY

The Guest Speaker at our April meeting was Keith Thomas and very good he was too.

He is one of a half dozen presenters for the General Aviation Safety Council who tour the country giving presentations and advice to private pilots in order to reduce the number of mishaps which occur each year, ranging from controlled air space infringements to serious loss of control of the aircraft by a pilot, too often leading to the death of the occupants.

Keith's audience at the WNAS contained only a couple of pilots yet he managed to explain his mission to us with authority and good humour. Thus, all of us went home much the wiser and potentially safer pilots and or even passengers in light aeroplanes. Thank you, Keith.

For details of our May and future meetings, please visit our website:

westnorfolkaviationsociety.org.uk or just come along to the Bowls Club in Mundford at 7:15 on May 7th. You'll be made most welcome.

David Allen



Ed Reed on Guitar with Vocals by Laura

AGM will be included in this event

Sunday May 19th 3.00 pm
Swaffham Assembly Rooms

Free for members
£12 non-members
Accompanied children free

Tickets from
Green Parrot 01760 724704
Ceres Bookshop 01760 722504
Enquiries: 01366 328648

**TRY
SAILING
IN MAY**

TASTER SESSIONS

**Ouse Amateur
Sailing Club**

Sunday 26th May 1.00pm - 4.00pm

hon.sailingsec@oasc.co.uk
www.oasc.co.uk

RYA.ORG.UK/PTBO

The poster features a collage of sailing-related images: a person in a red shirt on a boat, a person in a blue life vest, and a sailboat. A circular logo for the RYA (Royal Yachting Association) is also present.

Nar Valley Ornithological Society (NarVOS)

Tuesday 28th May at 7.30pm

The Barn Theatre
Sacred Heart Convent School, Swaffham.
Access and parking from Sporle Road.

Please come along to this illustrated talk
by Trudy Welham & Ben Knights, entitled:

From the Gadder to the Galapagos.

This will be the first visit to NarVOS of
'Norfolk born and bred' couple, Trudy
Welham and Ben Knights. Ben is son of
wildlife photographer Chris.

The Galapagos Islands are probably
better known than the Gadder - the
stream at Gooderstone. We can expect
this well-travelled couple to talk about
both locations and anywhere in between.

Admission £2 on the night for non-
member and visitors are most welcome.
Enquiries: 01760 724092

FIT MAMAS & CO

Approx. 1
hours brisk
walking.

PLEASE
BRING
COMFY
FOOTWEAR
& A SMILE!

**Fitness walking group for all
ages!**

Mama's, Papa's, Nanna's, Grandad's,
Children & Pushchairs all welcome!

Wundays 10.30am

Starting locations will vary weekly from surrounding
villages (Worthing, Winton, Southton, Aisle Ferry,
Oskering, Barton Brook).

For information please contact Charlotte on
07787335677 or follow Fit Mamas & Co on
(facebook)

The poster includes an illustration of a family (two adults and two children) walking together.

Beachamwell

Creative Writing Group



Meets every
second Monday
Afternoon

2.30pm

Everyone with an interest in
putting pen to paper welcome.

Enquiries: 01366 328895
or
james@jamesknoxwhittet.plus.com

Beachamwell Half Marathon

Run, Walk
or Ride



Sunday May 5th

more information

martinive3@gmail.com
01760 722068 / 07920 453 869
or
07947 887849

Beachamwell Wednesday Walkers

Explore the rights of way in and
around Beachamwell with us.

We meet at the Village Hall at 10.00
First Wednesday of each month

*Walks last between one and a half to two
hours*

All, including dogs on leads, are welcome

Some paths may be rough underfoot,
there may be stiles or fields may be
ploughed: come at your own risk and
please wear suitable clothing and
shoes for the outdoors

Further details please telephone
01366 328536



Beachamwell WI

Thursday 2nd May

7.30pm

**Barton Bendish Village
Hall**

‘Storytelling’
with

Diana Mullis

Visitors very welcome

Enquiries 01366 328536

Beachamwell Table Tennis



**Every Friday at
3.00pm
Village Hall**

Enquiries: 01366 328895
or
james@jamesknoxwhittet.plus.com

Beachamwell Book Group

**Tuesday 7th May
7.30**

Beachamwell Village Hall

Book to be discussed over a glass of
wine

‘The Mandibles’

[A Family 2029—2047]

Lionel Shriver

Annual Subscription £20.00

New members welcome

Enquiries: 01366 327023

Beachamwell Quiz



**Saturday
11th May
7.30**

Beachamwell Village Hall

Bring your own refreshments
There will be a Raffle
All proceeds to The Friends of
St. Mary's Church,
Beachamwell

Enquiries: 01366 328 648/729

Beachamwell 10th Anniversary of ‘Afternoon Tea and a Chat.....’

**Wednesday
May 15th
2 - 4pm**

Village Hall



Enquiries:
01366
347673



Boughton

Greetings by Oscar

Come and visit our pop-up
'Greetings Cafe' and
browse our selection of greetings
cards.

MAY MADNESS

Buy one card and get the second
card half price.

We will be serving light lunches.

Wednesday 15th May 2019
at All Saints' Church, Boughton
between 11:30 am and 2:00 pm.

Beachamwell Local History Group



To introduce
the group's
new project on
Beachamwell
Village School,
there will be a
talk by

Rosemary Steer, who is an expert on
Victorian schools in East Anglia and has
been a WEA Tutor.

"A Little Learning – Educating the People"

**Tuesday 21st May
7.30**

Tickets £3.50 (includes refreshments)
Enquiries 01366 327023

Wereham Village Hall Cinema

Proudly Presents:

'Johnny English Strikes Again' (PG)

Fun comedy for all the family

Friday 24th May

7.45 (bar open at 7.00)

Tickets £5 Children £3 (under 15)
on the door or book online at
www.werehamvillagehall.co.uk/events

Wereham Village Hall CIO,
Registered Number 1168472 Funding for the
cinema project was provided through WREN's
FCC Community Action

Enquiries: 07497 430005

Beachamwell

Pop Up Pub and Barbecue

Friday 24th May

7.00 - 10.30



Beachamwell Village Hall

Enquiries: 01366 328960



'We're open for hot drinks 10am-3pm weekdays, when you can browse the pre-loved book stall and enjoy our free Wi-Fi!'
Activities and Community Groups, extend a warm welcome to all new visitors

Monday -

Hatha Yoga - 9.30am to 11am. Main hall. Become more aware of how we conduct ourselves, physically, emotionally, mentally and spiritually. 07938978980

Fit Camp - 7.15pm to 8pm. Main Hall. Suitable for all fitness levels and abilities. Age 11+, under 16s £2, but must be accompanied by an adult. 07775 424325

No Mean Feet, foot care specialist – 1st Monday and Tuesday of the month, 10am to 2pm, meeting room. 07837 506906

Friends of Wereham Village Hall fundraising events group – 7.30pm. Monthly meet to discuss new ideas and organise events. 01366 500218 or email doreenirolph@talktalk.net

Tuesday -

Pilates - 9.30am to 10.30am. £5 Main hall. 07796 102677

Pop Up Café - 1st & 3rd Tuesday of every month 10.45am – 1pm. Main Hall. Selection of hot drinks and a slice of homemade cake £1.50. Light lunch £2.50. See Facebook or 500218 for latest menu.

Craft Group, social fundraising group - 2nd Tuesday of every month, Community Room, 10.30am – 12.30pm. Meet for a social, drink, cake and try different crafts. 01366 501330

Wellbeing course, 1pm to 3pm, 5 weeks from 30th April, Community Room. Delivered by Norfolk Community Learning Service. Book www.werehamvillagehall.co.uk/events or call the office 07497 430005

Beginners Yoga, by Restore and More Yoga - 5.45pm to 6.45pm, main hall. 07943 848431

Restore and More Yoga, 7pm to 8.15pm, Vinyasa Flow, main hall. 07943 848431

Wednesday

Zumba - 9.30am to 10.30am, main hall. A fun dance-fitness programme. 07769 341680

Cash Bingo - doors open 6.30pm, eyes down 7.30pm, main hall. Café open before and during the break. Weekly prize money + jackpot with prize Bingo's at Easter and Christmas. 01366 500798.

Thursday

Line dancing 9.30am to 11.00am, main hall, beginners welcome, £5. 01406 350732

Short Mat Bowls 7pm to 9pm, main hall. £2 per player, spectators are free, includes tea/coffee and biscuits. New players welcomed. 01366 501330

Youth Club (Term Time) 4.45pm to 6.45pm, main hall. Age 8+, free of charge. Call Swann Project 01366 386259. Tuck shop including hot dogs 50p, drinks and snacks.

Drama Group 'Wissey Players' every other Thursday 7.30pm to 9.00pm, community room. 01366 500976

Friday

Wereham Tots, (Term Time), parents and toddler group 10am to 12.00pm, main hall. £2 per session for up to 2 children (50p per additional child). 01366 500115.

Tai Chi, 12.30pm to 1.30pm, £3, main hall. Helps with breathing and relaxation. 01945 700222

Cinema Night Friday 24th May 'Johnny English Strikes Again'. Bar open from 7.00pm. £5. Loyalty card, 5 for the price of 4. Book www.werehamvillagehall.co.uk/events or call the office 07497 430005. See trailers on Facebook.

Sunday

Car Boot and Café last Sunday of every month except April & December. 9am to 1pm, Café open 8am with hot breakfast rolls, snacks and drinks. To book a £5 pitch indoor/outdoor 07759033492.

For more information on activities, cinema listings or to book, go to

<https://www.werehamvillagehall.co.uk/whats-on-or>

or pop in weekdays 10am–3pm to speak to Jo, Lyn or Sara or call us on 07497 430005, www.facebook.com/werehamvillagehall



BARTON BENDISH & EASTMOOR VILLAGE NEWS

Village Life In The Fifties - The Finale

Socialising - The Spread Eagle was the focus for socialising, mainly for men, darts, shove halfpenny, dominoes etc were very popular. Ladies tended to use the Village Hall for WI meetings, arranging social evenings, which included singing, short plays and of course Whist Drives.

For the children there were Brownies, Guides and Scouts to keep them entertained after school and during the holidays. The Bowls Club [still running] opened in 1947 and was really popular. The other big social event was the Coronation Celebrations held in the barn at Hill Farm, everyone came, although sadly the rain spoilt the sports day that was planned at The Hall but happily it was able to take place at a later date.

A Policeman would occasionally put in an appearance, leaning his bicycle on the Pub wall to announce his presence. Medical issues were taken care of by Nurse Horn who saw the joyful times of birth and the sadness of death. Dr Smith held a surgery twice a week - Tuesdays and Fridays at Church Farm, the latter was kindly allowed by Mrs Harding, the Doctor could be summoned on other days by using the telephone kiosk. Being a child in the fifties was a great pleasure - plenty of friends, freedom and equality. **Maureen Buck**

Diamond Wedding Celebrations

On March 30th Barton Bendish Village Hall was the venue for celebrating the Diamond Wedding of Roy and Gwen Sherwood. Gwen, nee Gathercole, lived in the village and is well remembered by several of the older villagers. She married Roy in St Andrew's on March 28th 1959. The reception was held afterwards in the Village Hall which in those days had no kitchen or indoor flush toilets.



Sixty years on, family and friends gathered together once again to celebrate what is a remarkable event in this day and age. The Best Man and one of the Bridesmaids were there as well as Freda Rumball who played the organ at their wedding.

Without a doubt there would have been an enormous amount of reminiscing! **Jill Mason**

BARTON BENDISH & EASTMOOR VILLAGE NEWS

Resignation of Maureen Tasker

It was with sadness that the Village Hall Trustees received the resignation of Maureen as Treasurer, Secretary, Booking Manager and Caretaker.

She, and her late husband Bill, shouldered these responsibilities back in 2005 and ever since have efficiently organised the day to day running of the Village Hall. Under the Tasker umbrella this worked seamlessly but now it has been necessary to divide up the roles. At a meeting of the Trustees on March 27th Robin Simon was appointed as the new Treasurer, Chris Parsons the Secretary and Andrew Stephen will be responsible for taking the bookings.

In future please contact him on 01366 347549, mobile 07748015464 or email acstephen@hotmail.com.

David and I will continue for the time being to act as caretakers.

Thanks Maureen for everything you've done in the past, we are all very grateful.

Jill Mason (Chair of Barton Bendish Village Hall Trustees)

Village Hall Update

Two of the Village Hall Management Committee attended a course on local funding in King's Lynn run by Community Action Norfolk. One of the speakers was from the Lottery (and was familiar with our project) and another represented Norfolk Community Foundation. We learned that our applications so far have been on the right lines. In addition, we were asked to consider how our lives would be affected if we lost our Village Hall and, in contrast, whose lives could be enhanced by expanding and improving it. Rural isolation, loneliness, provision for the elderly and for those with special needs are all considerations for any community like ours or any relevant funding process.

Chris Parsons attended the launch of a fund designed to pay the VAT requirement of projects like ours. We have a strong case and Liz Truss has promised to support it.

We are organising fundraising activities, the Gardeners' Question Time being the latest one. We continue to seek new sources of funding and would urge you once again to support the 'West Norfolk Wins' Lottery.

Andrew Stephen

(Chair of Village Hall Management Committee)



BARTON BENDISH & EASTMOOR VILLAGE NEWS

Barton Bendish Ordinary Parish Council Meeting held on 13th March 2019

Cllr McAlister (Vice-Chair) was in the Chair, as apologies had been received from Cllr Chapman. Four parishioners were in attendance.

It was reported that Anglian Water had finally repaired the damage to the verges on Hatherley Gardens, which had been caused by their contractor. The damage to the kerbing had been reported to Norfolk County Council Highways for repair. Highways had painted "slow" signs on the road surface on Boughton Long Road but these were not in the most appropriate place. A parishioner raised concerns about the health and safety of pedestrians due to incidents of HGVs cutting the corner and driving across the road on Boughton Long Road. It was agreed that a meeting between Councillors and the Highways Engineer should be arranged to discuss all outstanding Highways issues and to raise again the issue of extending the 30mph speed limit in the village.

Following the resignation of Cllr Anne Parker the Parish Council had a vacancy for a new Councillor, however, the forthcoming Parish Council Elections on 2nd May were before the next Parish Council meeting and it was hoped that the vacancy would be filled at these Elections.

The Borough Council had consulted the Parish Council on their Local Plan Review. Barton Bendish was still classified as a "small village or hamlet" and therefore had no development boundary.

The next meeting will take place on Wednesday 8th May 2019. This will be the Annual Parish Council Meeting starting at 7.30pm in the Village Hall.

Miss Sarah Thorpe, Parish Clerk

01945 430930 or bartonbendishparishcouncil@aol.co.uk

Further information is available on the Parish Council website at bartonbendishparishcouncil.norfolkparishes.gov.uk

Parish Council Elections May 2nd

Most Parish Councils have problems finding enough people to join them. Not so here where 7 places will be contested by 8 people. It is another sign of the way people in Barton Bendish like to get involved. Long may it continue.

Andrew Stephen

WWI Commemoration Booklet

Copies of this booklet (produced by the Parish Council) are available, for anyone wanting one, in St Mary's Church and St Andrew's Church. They are free.

BARTON BENDISH & EASTMOOR VILLAGE NEWS

Celtic Service - March 24th

I am fairly certain that this kind of service had never been tried before at St Andrew's but, in an era which seems to become increasingly discouraging for churches, it is good to see some imaginative responses to the problem of declining attendances and interest. Offering relevance has always been a good response to indifference and the Breakfast Church events have encouraged some thought of spirituality in a less formal structure. So it was with the Celtic Service which was well attended and created a lot of interest. It was a simple, quiet and largely candlelit service. We live in a noisy, frenetic, selfish and chaotic world. Opportunities to find tranquillity and silence, like this service, should not be missed.

Andrew Stephen

Annual Parochial Church Meeting - April 3rd

This detailed and interesting meeting was attended by members of the public, showing that St Andrew's, like the pub and the Village Hall, is a significant part of community life in Barton Bendish. It was pleasing to see that building matters are in hand and that the finances, given the size of congregation, are very healthy. It was significant too to hear the Reverend Ken, and the PCC, acknowledge the support of Barton's active, energetic and united community.

Andrew Stephen

Community Breakfast - May 11th

Our next Community Breakfast is at 9.30am in the Village Hall. All are welcome, irrespective of belief. More than anything, it is an opportunity for the community to break bread together and to enjoy each other's company.

Linda Webster 01366 347563 or Mhari Blanchfield 01366 347849)

Quiz Night - April 6th

The Village Hall hosted another hugely successful and enjoyable quiz, which raised a staggering £367 towards the Development Project. An excellent set of challenging and varied questions taxed all the teams from start to finish. There was something for everyone. Yet again, a Village Hall event was completely sold out and everything went without a hitch. It became very hot during the evening and such good numbers meant that we were crammed in like sardines. We desperately need more space and better amenities.

Our thanks to the organisers whose hours of hard work certainly paid off!

Andrew Stephen

BARTON BENDISH & EASTMOOR VILLAGE NEWS

Litter Pick April 7th

Twelve hardy souls gathered on a misty and overcast morning outside the



Village Hall as part of a Norfolk wide drive to make our villages litter free. 1.5 hours later 12 bin liners had been filled with a variety of rubbish – most of which were not biodegradable. Fincham Road seemed to produce more rubbish than anywhere else, much of which was the left overs of McDonald's meals. It would seem that people driving past the village don't want to take their rubbish home with them. I wonder if this is a generation thing. Our disposable society seems to have no truck with bins or with the idea of protecting our environment.



Anyway, thank you to all the volunteers who have helped to improve our surroundings and to the Berney Arms who provided them with tea and coffee. Another

example of the community working together for each other.

Andrew Stephen

BARTON BENDISH & EASTMOOR VILLAGE NEWS

Open Gardens - Sunday June 2nd

There's still plenty of time to do a bit of tidying up in the garden so that you can have it open for our 'Open Gardens Day'.

It normally attracts many visitors, some of them regulars, to the village and it's always good to have some new gardens for them to look at. They don't have to be spectacular, fancy or large because what people seem to enjoy most is seeing what other people have done with their own gardens, discussing them, asking advice on solving problems and generally looking for fresh ideas. It's not too late to add yours to the list of gardens which will be open. Open Gardens Day really is a community project.

The proceeds from this event go to St Andrew's and it is the main fund raising event of the year for the church. Even if you don't want to have your garden open there are other ways of helping such as selling tickets and serving refreshments on the day.

Needless to say, donations of raffle prizes, plants and produce for the stalls, as well as cakes, would be much appreciated. If you are willing to support the event in any way please phone 01366 347549.

Liz Stephen

Church Cleaning - May 18th (St Andrew's)

If you can spare an hour, please come along to help with spring cleaning at 2pm.

Book Launch 'Brian Reynolds – In His Own Write' - June 8th

As reported in last month's issue, Brian Reynolds will be launching his



autobiography in the Village Hall on Saturday 8th June. We envisage that the event will take place from 2pm – 4pm, with an interval for light refreshments. We are hoping that the Berney Arms will have their Prosecco Horsebox available before, during and

BARTON BENDISH & EASTMOOR VILLAGE NEWS

after the event. As you know, the Village Hall is not licensed to sell alcohol. Brian, who is well loved in this neighbourhood for his wonderful work with the estate and with the community, suffers from Parkinson's Disease and is giving all the proceeds of the sale of his book to research into the disease (£10 per copy). There will be no entry fee but there will be a retiring collection in aid of Parkinson's. He has invited two very good friends to speak with him and the outline of the afternoon is as follows:

2pm – Welcome and introduction to the event by Andrew Stephen. Brian Reynolds will talk about his book, focussing on his experiences as a Boarder at King Edward VII Grammar School, King's Lynn (KES). He will be followed by Will Stebbings, another former KES pupil who has written a number of very readable novels, some of which touch upon a certain school in King's Lynn. He will talk about these and his experiences at school.

Interval – Refreshments

3pm (ish) – Russell Mackenzie (A Nuffield Scholar) will talk about the other key element in Brian's life – farming. He is a fine public speaker and a man who learned a lot under Brian's tutelage. This will bring us bang up to date and show us why Brian has been so important to Barton.

3.30pm – Brian may add a few more words, sign and sell his book.

It is worth observing that without Brian, we might well have lost the Village Hall. I am sure that the event will be well supported. If you would like to come please email me at acstephen@hotmail.com or phone 01366 347549 so that we can organise seating and catering.

Andrew Stephen

Art/Craft/Photography Exhibition and Sale – September 14th and 15th

This will be the tenth annual exhibition and sale of art, photography and craft. Details are now available by contacting bartonbendishevents@gmail.com or Liz Stephen (01366 347549). Previous entrants, and all those who have previously contacted us, will receive the information automatically by email.

Queries: **Linda Webster 01366 347563 or Mhari Blanchfield 01366 347849**

Future Events

Saturday June 22nd

Yard Sale

Sunday July 21st

Spring cleaning at St Mary's - 9.30am

Sunday July 28th

Summer Soirée St Mary's Church 4pm

BEACHAMWELL, SHINGHAM & DRYMERE VILLAGE NEWS

Mobile Post Office—New Times

Monday and Thursday 13.00 – 13.15

Tuesday and Wednesday 11.10 – 11.30

Parish Council



A 'Notice of Uncontested Election' has been received so the following people have been duly elected Parish Councillors for the Parish of Beachamwell.

1. James Richard John
2. Lambert Diana Madeline
3. Sanderson Thomas Charles Hamilton

Your new Parish Council will be formally welcomed at the Annual Parish Meeting. This and the Parish Council Meeting will take place on Monday May 13th in the Village Hall at 7.30. Everyone is welcome to attend.

As always, if you have a query or a problem, you can consult any of the Councillors at any time – they are more than willing to listen and help if they can.

The Parish Council website is beachamwell-pc.norfolkparishes.gov.uk

Eileen Powell

St. Mary's Church

It was a grey morning, shrouded by mist, for the last full Communion service at



St. Mary's on Sunday, 7th April. The vicar preached an interesting sermon about Lazarus who, according to the Gospel of St. John, Christ raised from the dead. Whether St. Mary's can be raised from the dead is much more doubtful. When you read this, Easter Sunday, which marks Christ's raising from the dead, will have been the last regular service in the church after a thousand year of worship. The bells which have rung out over the village green for generation after generation on Sunday mornings will have been silenced for, at least, months to come

It is hoped that the St. Mary's will become a Festival Church and that there will be a service

BEACHAMWELL, SHINGHAM & DRYMERE VILLAGE NEWS

to mark each important event in the church calendar. One advantage of becoming a Festival church is that it will no longer be necessary to pay the parish share; unfortunately, this financial burden will fall on the other churches in the group which might prove somewhat unpopular. Another disadvantage is that in order to be a Festival church, a minimum of six services will have to be held each year. Whichever Trust, if any, takes on the running of the church will soon discover that arranging the services is one thing, getting people to attend them is much more problematical. Most Christians would agree that the most important event in the church calendar is Easter and yet only six people attended the Easter Sunday service in St. Mary's last year. This is hardly a promising basis on which to form a Festival Church.

However, Christianity is a religion of hope over experience and perhaps the bells of St. Mary's will again be heard in Beachamwell, from time to time, above the harsh music of the rooks, for years to come.

James Knox Whittet

Easter Sunday

A service of Holy Communion by Extension was held this Easter Sunday and was attended by 12 people. The church looked absolutely beautiful – full of flowers and sunlight. It was so sad to think that this was the end of an era....

I would like to thank the people who so kindly donated the flowers and their time, the arrangements really did look stunning.

Eileen Powell

Flower and Brass Cleaning Rota for May.

5th Olwyn Locke, 12th Eileen Powell, 19th Mary Riches, 26th Susie Rix

The rotas for the flowers and the opening of the Church will continue

The Friends of St Mary's

There was a special village meeting on the 10th April to consider the future of the Church. It was enthusiastically attended by a good number of people from the village, as well as by Rev. Ken Waters. He confirmed that the PCC no longer existed following their meeting on the 13th March. The various options for the future of the church were discussed which ranged from being a Festival Church to demolition. Everyone who attended agreed that the Festival Church option should be explored further and I will arrange to meet with the



BEACHAMWELL, SHINGHAM & DRYMERE VILLAGE NEWS

potential conservation Trusts which may be prepared to take the Church on after Easter. If that is not successful we will consider a new Trust being formed from within the village. A number of villagers were willing to get involved if this was necessary. Rev. Ken was able to confirm (hot off the press) that the Archdeacon had confirmed that if the Church was a Festival Church it would not be required to pay its parochial share which was a great relief as it has been a significant financial burden in the past.

The other good news is that the Friends have now raised £6380.00 towards the repair of the thatched roof - with funding which has been reserved by the PCC we are now in a position to apply for match grant funding to start the work. David Levitt has obtained a number of competitive quotes and we will be in a position to compare the works quoted for to ensure we get the best value for the work to be done. A repair should last for a further 15 to 20 years.

We think with the current round of village events we should be able to maintain the church building with the help of grants over the longer term. It will only work though with the continued support of the community and it was very encouraging that the meeting was so enthusiastic in its continued support for the maintenance of St Mary's as a central part of our village and for our plans.

Thank you to all for attending. We will keep you all informed of our progress with the conservation Trusts and the works to the roof.

Peggy Ray (Chair of FoSM)

Beachamwell Open Gardens

The Beachamwell Open Gardens this year will take place on Sunday 30th June between 12 and 5 pm. It is being organised by the Friends of St Mary's to raise funds for our unique Grade One listed Church.

There will be:

- ◆ Lunches and teas in the Village Hall
- ◆ The Swaffham Shanty Crew on the Village Green
- ◆ Music in the Church.

We are looking for volunteers willing to:

- ◆ Open their gardens
- ◆ Help with the lunches and teas in the Village Hall
- ◆ Sell tickets

Please contact me on 01366 328811 if you are willing to do any of the above.

Brenda East

BEACHAMWELL, SHINGHAM & DRYMERE VILLAGE NEWS

Open Garden Raffle

I have volunteered to organise this again so I'm on the beg! Do you have any canned or dried food that you would like to donate for a hamper? Or any new gardening bits and bobs you do not need including seeds for a garden hamper? Any donations will be gratefully received and can be left in the village hall or by my side door.

Any queries please contact me on 01366 328892

Cathy Friend

Quiz



Don't forget that if you would like to enter a team for the FoSM's quiz to be held on May 11th there is still time. However, you must let us know as there are only a few places left

Peggy English and Eileen Powell

Beachamwell WI



April's WI meeting was all about fitness and health. Our speaker, Susi Hancock, gave us an entertaining and informative talk and demonstration, with tips and suggestions for different ways to keep strong and supple into "advancing years". She showed us exercises which can be slotted easily into everyday routines. So we will now all be standing on one leg while we brush our teeth! A competition to devise a healthy snack was a delicious follow up.

Because of elections, May's meeting will be at Barton Bendish village hall. On May 2nd, our speaker will be Diana Mullis, who specialises in storytelling. It promises to be another entertaining evening. As always, visitors are very welcome to come along. Enquiries to Helen Ranger 01366 328589

Maggie Mackenzie

Beachamwell Local History Group

To kick-start our project on Beachamwell Village School, the Local History Group has invited a guest speaker, Rosemary Steer, who is an expert on Victorian schools in East Anglia. Her talk, at 7:30pm on Tuesday, 21st May is entitled "**A Little Learning – Educating the People**". Rosemary has been a WEA tutor and I am sure that this will be a most interesting and entertaining evening. Tickets £3.50, to include refreshments. Enquiries 01366 327023.

Maggie Mackenzie

BEACHAMWELL, SHINGHAM & DRYMERE VILLAGE NEWS

Beachamwell Village Hall

Tree Planting on the Playing Field

In 2018 the much-loved cherry tree behind the village hall split apart and had to be removed. This was a source of great sadness to villagers like Kim Begg, who had watched it grow and enjoyed its beautiful spring blossoms as she herself grew up. Now, a year later, it has been replaced by three new cherries, which will blossom in spring and autumn. Kim's two sons, Ashdon and Seth, were on hand to water in the newly planted trees.



Chrissy Barr and Simon Smith organised the planting of the cherries and three multi-stemmed birch trees, with the help of a team from the Village Hall Committee and friends.

Funding for the project was provided by the Beachamwell Horticultural Society, which held its last annual show in 2016. Carole Wilson and Diana Lambert, who were the main organisers of the

Horticultural Society in latter years, are delighted that the society's remaining funds have been used to provide the trees and also more funding for bulb planting in the autumn. Both projects will enhance our village environment for years to come. **Leah Spencer**

Daffodils

We've really appreciated the wonderful display of daffodils along Chestnut Walk. They've been absolutely beautiful and a perfect colour. Many thanks to Chrissy and Simon and to the Parish Council for lifting our spirits no end!

Gina and Tim Coggin

They certainly were a delight and received many favourable comments. It was therefore a complete mystery as to why someone decided to park their car in the middle of them not once but several times. It was totally unnecessary, hurtful and unfair.....**Eileen Powell**

BEACHAMWELL, SHINGHAM & DRYMERE VILLAGE NEWS

Beachamwell Village Hall AGM

On 28 March the Village Hall Committee held its AGM. The meeting was well attended and there was a positive response to the annual reports from the three officers: Peter Garner (Chair), Susie Rix (Secretary) and Judith Blatchford (Treasurer). The main business for 2018/19 was completing the Accessibility Project by providing a hard surface path from the track to the front door.

Three members of the committee stood down at this meeting: Mike Walker (vice chair), Susie and Judith. Peter thanked them for their services to the committee and presented gifts as a token of appreciation for their hard work.

It is the sign of a thriving group when people are willing to join a committee and Peter welcomed four new volunteers: Pat O'Donnell, Mark Lusby, Ann Knox Whittet and Cathy Friend. A big thank you to them all and a special thank you from me to Cathy, who is the new booking secretary.

Over the past few years the committee has made many improvements to the hall and its facilities, making it an increasingly popular venue for groups and social events in the village. Thanks to an active committee with lots of ideas, this is set to continue. **Leah Spencer**

The committee for the Village Hall for 2019/20 is as follows

Chairman: Pete Garner

Vice Chairman: Colin Friend

Secretary: Simon Smith

Treasurer: vacant

Bookings: Cathy Friend

Tim Hudson

Mark Lusby

Ann Knox Whittet

Pat O'Donnell

As you can see there is a vacancy for a Treasurer. Does anyone fancy taking on this vital role?

We hope to reinstall community social events such as the pop up restaurants. These are non profit making - purely a pleasant evening where no one has to wash up!

Is there anything else similar that villagers would like to attend? Please let any of us know and we will see what can be done. **Cathy Friend**

CHURCH SERVICES (WISSEY VALLEY/SOUTHERN GROUP)

St Mary's Church, Beachamwell No Services until further notice

Sunday 5th May The Third Sunday of Easter

9.30 am	Methwold	Holy Communion
9.30 am	Whittington	Service of the Word
11.00 am	West Dereham	Family Service
6.00 pm	Wereham	Evensong

Saturday 11th May

9.30 am	Barton Bendish	Breakfast Church
---------	----------------	------------------

Sunday 12th May The Fourth Sunday of Easter

9.30 am	Methwold	Service of the Word
9.30 am	West Dereham	Holy Communion
9.30 am	Whittington	Service of the Word
10.00 am	Boughton	Breakfast Church

Sunday 19th May The Fifth Sunday of Easter

9.30 am	Methwold	Methodist Service
9.30 am	West Dereham	Service of the Word
9.30 am	Wretton with Stoke Ferry	Service of the Word
11.00 am	Wereham	Holy Communion

Sunday 26th May The Sixth Sunday of Easter

9.30 am	Methwold	Service of the Word
9.30 am	West Dereham	Service of the Word
10.00 am	Whittington	All Age Service
11.00 am	Boughton	Holy Communion
6.00 pm	Barton Bendish	Evensong

Midweek Services

Holy Communion 10.00am Thursday **Fincham** 9th **Boughton** 23rd

Holy Communion 10.00am Tuesday **Whittington** 21st

Compline 5.30pm Thursday **Wretton with Stoke Ferry** 23rd

Baptisms and Weddings (Please contact the Churchwarden in your Parish)

Barton Bendish: Mhari Blanchfield 01366 347849/Linda Webster 01366 347563

Boughton: Pam Wakeling 01366 500429

Wereham: Sheila Smith 01366 858165

CHURCH SERVICES (PRIORY/NORTHERN GROUP)

Sunday 5th May The Third Sunday of Easter

09.30 am	Runcton Holme	Holy Communion
10.00 am	Shouldham	Morning Prayer
11.00 am	Marham	Holy Communion (Holy Trinity)
11.00 am	Stow Bardolph	Holy Communion

Sunday 12th May The Fourth Sunday of Easter

9.30 am	Shouldham Thorpe	Holy Communion
10.30 am	Marham	Morning Worship (Holy Trinity)
11.00 am	Watlington	Holy Communion
11.00 am	Stow Bridge	Holy Communion
6.00 pm	Fincham	Evensong

Sunday 19th May The Fifth Sunday of Easter

9.30 am	Wormegay	Holy Communion
10.30 am	Marham	Café Church (Methodist Chapel)
11.00 am	Shouldham	Holy Communion
11.00 am	Nordelph	Holy Communion

Sunday 26th May The Sixth Sunday of Easter

9.30 am	Fincham	Holy Communion (BCP)
10.30 am	Marham	Morning Prayer (Holy Trinity)
11.00 am	Tottenhill	To be confirmed
11.00 am	Wimbotsham	Holy Communion

Every Sunday

3.00 pm	Nordelph	Family Service
---------	----------	----------------

Thursday Services at 10am

Holy Communion **Fincham** 2nd and 16th.
Holy Communion (BCP) **Runcton Holme** 2nd

Baptisms and Weddings

Please contact Mrs. Louise Vigus 07596 707469
louise.vigus@westnorfolkpriorygroup.co.uk

Churchwardens

Fincham	Cathy O'Brien	01366 347279
Marham	Philip Fay	01760 444199
Shouldham	Brian & Ann Hullah	01366 347814
Shouldham Thorpe	Gary Eggleton 01366 347829/Gordon Reid 01366 47253	

COMMUNITY NOTICE BOARD

MOBILE LIBRARY VISITS - Please note changed days/times

DATE	VILLAGE	LOCATION	TIME
Tuesday 21 May	Barton Bendish	Hatherley Gardens	11:10 am
Tuesday 21 May	Beachamwell	Old Post Office	09:45 am
Tuesday 28 May	Drymere	Telephone Kiosk	09.45 am
Tuesday 21 May	Boughton	Mill Road	10:45 am
Friday 17 May	Wereham	Queen's Close Village Hall	12.25 am 12:45 am

For services to all 'Group 4' villages ring Mobile Library Information on 01362 693184 (Barton, Beachamwell Boughton) or 01366 383073 (Wereham) or look at the website - <https://www.norfolk.gov.uk/libraries-local-history-and-archives/libraries/your-local-library/mobile-library-routes-and-timetables>

VILLAGE BUS SERVICES

FROM	ROUTE	OPERATOR	DESTINATION
Barton Bendish	31 (Saturday)	Lewis Coaches	Swaffham
Beachamwell	31 (Saturday) 18 (Tuesday)	Lewis Coaches Eagles Coaches	Swaffham King's.Lynn & Swaffham
Boughton	18 (Tuesday)	Eagles Coaches	King's.Lynn & Swaffham
Wereham	28 (Mon to Sat) 40 (Mon to Sat)	Coach Services Coach Services	King's Lynn Thetford/Downham

Traveline 0871 200 22 33 or (www.traveline.info) Call cost 12p per minute

VILLAGE, COMMUNITY and PARISH HALL BOOKINGS

Barton Bendish	Andrew Stephen	01366 347549	07748015464
Beachamwell	Cathy Friend	01366 328892	
Boughton	Pam Wakeling	01366 500429	
Wereham	Doreen Rolph	01366 500218	

MARKETS - Farmers' and Indoor

Ely (Farmers')	Second and Fourth Saturday 8:00-2:00pm
Fakenham (Farmers')	Fourth Saturday 8.30am to 12:00pm
Wisbech (Farmers')	Alternate Fridays
Swaffham (Indoor)	Every Friday 9.00am to 1.00pm
King's Lynn (Farmers)	Closed until April 2019

For information:- www.farmersmarkets.net or your local Tourist Information Office

BOUGHTON VILLAGE NEWS

All Saints' Church

At last our new oil tank has been installed and we have heating in the church again! It's been a long haul, with various difficulties along the way. I never expected to have to seek full planning permission for the installation of a new tank in the same place as the old one. We've been very lucky with the weather, as there were no freezing days when we were without heat, but all seems well now.

The church is currently without a permanent Treasurer. We should thank Paul Coulten for his service to the church in this capacity over several years. If you know of anyone who might be willing and able to take over, please urge them to come forward.

Our next major fundraising day will be Open Gardens Day on June 9th. I was amazed that one person rang me, volunteering to open his garden for this. Usually it is much harder to convince people to open and share their village gardens. We will probably not have all the usual gardens this year, for various reasons, so new participants are needed. Small or large, plain or fancy, people who love gardens will enjoy seeing all of them. It doesn't have to be perfect. Regular visitors to mine will recognise untidy bits that have been there for years and there are plenty of weeds, but they come back year after year and newcomers are always amazed at the sheer variety of the gardens in this village. (Easter Monday update - we have at least seven gardens promised and I'm hoping other people will reply to my requests.)

We also owe a lot to the wonderful lunches which have been put on by Sandy and her crew over the years. New people are needed to help whoever runs the lunches this year. Good refreshments make the day every bit as much as the gardens. If you can volunteer your garden, or help with refreshments, please get in touch. My email address and phone number are on the front of the magazine.

Easter Vigil and Celebrations

This lovely service took place again on Holy Saturday. It takes us from the darkness into light, with fire, candles, renewal of baptism vows and a good sprinkling of holy water with rosemary branches. Carol really enjoyed doing that! It was good to see people from other villages taking part, with several taking the blessed wafers and wine to be used at other churches on Easter Sunday itself. Attendance was considerably down on last year, unfortunately, but we have lost people through illness and death. Our thoughts were with them at the service.

Pam Wakeling (Churchwarden)

BOUGHTON VILLAGE NEWS

Garden Emporium ~ Open Gardens Day 9th June 2019

This will be our eighth year of trading at Open Gardens day and your support in the past has been tremendous with donations of plants and anything 'garden related' for us to sell on the day. Our thanks to those of you who have already dropped items off and we look forward to receiving many more! For a small commission we will sell goods on your behalf. We are happy to collect and even store items if you need them out of the way!

Tombola prizes would also be most welcome.

Angela and Andrew Faherty 01366 501335

Boughton Fen

This is not my usual type of article regarding the happenings on Boughton Fen, but I thought people would like to know what has been going on behind the scenes.

As many of you will be aware, over ten years ago we entered Boughton Fen into the Higher Level Environmental Stewardship scheme, which gave us money to maintain and improve the fen. This, along with our specialist contractors and groups of volunteers has made the fen into the pleasant place it is today. However, like all good things, this finished last August (2018) when our ten year agreement came to an end.

But all is not lost. Through working closely with Natural England during the summer and autumn of 2018, we have been able to apply for a further stewardship agreement. Just before Christmas 2018, we received news that we had achieved this, and the new Countryside Stewardship agreement runs for another ten years, giving us funding through to 31st December 2028.

This means that we can continue to work to maintain the fen, keeping it looking good, and maintaining the environment to support the rich and diverse wildlife that thrives there. If you would like to join in our efforts, please give me a call on 01366 500461.

As I write this (9.04.19) the first summer visitors have returned to the site. As yet, nobody has heard a cuckoo on the fen, but hopefully, by the time you read this in early May, they will be making their presence known. Various other spring and summer birds, dragonflies and moths will no doubt appear shortly. Enjoy the walk around the fen, and pause on the seats to admire these gems, and enjoy the views.

Mark Pogmore

BOUGHTON VILLAGE NEWS

Local Elections

For Boughton I am pleased that for this year we will have the full seven councillors (including one new, younger one). This means it is not a contested election.

BEESTON Andy

COOPER Glen Geoffrey

COULTEN Paul Murray

MATTHEW Neil Anthony

PAYNE Tam

POGMORE Mark Roderick

SCRIVENER Tim

In respect of the Wissey Ward Borough Council election it will go to the vote as there are four candidates for one post. Colin Sampson is our current Borough councillor.

Wissey Ward

BANKHEAD John William George UK Independence Party (UKIP)

MCNEILL Jim Labour Party

SAMPSON Colin Talbot Conservative Party

TAYLOR Judith Ann Independent

Tom Roberts (retiring PC chairman)

Greetings by Oscar Pop-Up Cafe

Light lunches will be served at our next pop-up on Wednesday 15th May at All Saints' Church, Boughton between 11:30 am and 2:00 pm. We have re-stocked our cards which still remain at the special price of £1.00 each and for this month only buy one card at full price and get the second card half price. Pop along for a card or two, a chat or some lunch or all of the aforementioned, you will be most welcome.

The Boughton Village Caravan



WEREHAM VILLAGE NEWS

Mobile Post Office will park near the Village Pond on the following days/times
Monday and Thursday 14.00 - 14.15
Tuesday and Wednesday 12.25 - 12.55

Village Hall Activities

All activities are listed in the Community Section of this magazine.

Any further details are featured in the website www.werehamvillagehall.co.uk and on the Facebook page Wereham Village Hall.

Open Gardens

Wereham open Gardens is on Sunday 16th from 12pm to 5.30pm. Tickets and directions for the gardens will be available from the church on the day.

As usual there will be our wonderful lunches and afternoon tea and cakes which will be served in our new village hall.

There will also be our plant, craft and tombola stall, along with our usual gardening raffle prizes. Donations of plants, seedlings and items for our tombola would be gratefully received. Any items that need to be picked up please contact Doreen Rolphe on 01366 500218.

It is not too late to enter your own garden, anyone considering and perhaps not sure please contact Greg Baddock for a chat on 01366 50023.

We have a lovely collection of gardens for everyone to enjoy and we would really appreciate your support as all monies received go towards the up keep of our centrally located historic church.

Craft Group

A reminder to you all that we have our annual CRAFT FAIR in the village hall on June 1st, 10am until 4pm. We have a good selection of crafters for you all to enjoy and hopefully purchase that unusual present / gift. There will be the old favourites a raffle and a cake stall. The cafe will be serving freshly made filled rolls with the choice of 4 fillings, cheese, egg, tuna or ham and of course plenty of tea and coffee. Ice creams or lollypops. New members always welcome especially if you do a craft other than knitting or sewing.

Please contact Rosemary on 01366 501330, 07749240606 or email rosemary.pease@btinternet.com.

Short Mat Bowls

We have now gone back to the new permanent time of 7pm until 9pm every Thursday evening. We are a small friendly group who have lots of fun. Tea and coffee with biscuits are served during the evening and a birthday cake is made for whoever has a birthday. Please contact Philip on 01366 501330, 07759033492 or e-mail rosemary.pease@btinternet.com.

WEREHAM VILLAGE NEWS

Car Boot and Café

The car boot and cafe continue to thrive. We have increased our range of foods served in the cafe and we now do Toasted Tea Cakes with butter or 2 slices of Toast with butter and the option of Jam, as well as all the old favourites. The fifty fifty raffle is very popular with Judith Taylor being our March winner of £29.00. For details please contact Philip on 01366 501330, 07759033492, e-mail rosemary.pease@btinternet.com.

Wereham Church Festival Sunday 21 July 11am - 2.30pm

Can you please help us to keep our lovely church open, vibrant and available to all? Our annual Church Festival is our major fundraiser but is also a great day out for the whole family.

We would welcome:

Raffle Prizes, Donations, Wine, Chocolates etc. Items for the Tombola Stall and the Hoopla Stall, Cakes, Preserves, Home Made Jams and Pickles.

Collection Points: Doreen 500218 - Charles and Ivy 501108 - and Tom 500052

Items will be gratefully collected if you call any of the above contacts.

Thank you very much for your support on behalf of Wereham PCC

Wereham Parish Council

Next Meeting Dates

Tuesday 14 May 2019 at 7.00 pm in the Wereham Village Hall (Annual Parish Meeting and Annual Meeting of the Parish Council)

Agenda items must be received before the end of the month prior to each meeting, items received after this time will not be possible to discuss. Please send to the Parish Clerk at werehampc@gmail.com. The Agendas for meetings are always published on the Wereham Village Notice Board three clear days before the meeting, on the Wereham Parish Council Facebook Page and on the website www.werehamparishcouncil.co.uk You will also find minutes of all meetings here too.

Wereham Cemetery – Memorials Next of Kin

Please could any members of the public known to be the next of kin for memorials within the Wereham Cemetery please contact the Parish Clerk to agree to share their contact details. We need to ensure that our contact database for the purposes of contacting next of kin, where we need to discuss memorials is as up to date as possible.

Helen Richardson Wereham Parish Clerk and Finance Responsible Person

Email werehampc@gmail.com or Phone/Text: [0779 500 6811](tel:07795006811)

Little Oaks

Preschool

& Holiday Club

Ofsted Registered EY246821

**A Warm, friendly welcome is
waiting for you.**

Accompanied sample sessions for you and your
child the first Wednesday of every month 9:30-11:00

Term time age 2-5
Holiday clubs for
age 2-8
year olds

Open 50
weeks of
the year

15hrs a week
funded places
from the
age of 2

A Variety of hot
and healthy
meals
provided

Places available
for special
educational
needs

Contact Debbie - 01366 502150

47 Wretton Road, Stoke Ferry, Kings Lynn, Norfolk, PE33 9QJ

www.little-oaks-preschool.uk.org



Maths Tutor (Year 6 to GCSE)

- unravel problems
- boost confidence
- improve numeracy

A Cambridge graduate offers
one-to-one tuition in your home
(one-off or ongoing)
£30 per hour

For details, or to arrange a
£10 INTRODUCTORY SESSION
contact Katherine Shaw
07773 – 433180

Methwold Nursery School and Pre-School

Experience for yourself the welcoming atmosphere of our nursery where exceptional care, homely surroundings and wonderful large garden are second to none. Our highly qualified experienced staff will ensure that each child's individual needs are met and provide them with the opportunity to make new friends, develop in confidence and become independent whilst

Learning through play!

Open all year Monday to Friday 7am to 6pm
from age 3 months to 6 years

Breakfast, After School and Holiday Clubs up to the age of 6
570 hours of Free Child Care* for all children residing in Norfolk/Suffolk
over the age of 3 and 4 years. Child Care Vouchers Accepted

Visit our website to view "The Tasks" and learn more about us!
www.methwoldnurseryschool.co.uk

39 Stole Road, Methwold, Thetford IP26 4PE Tel: 01366 728419

*Subject to Local Authority Terms and Conditions

JET ACCOUNTANCY & BOOKKEEPING SERVICES

Professional and qualified
service offering:

- ♦ Accounts
- ♦ Bookkeeping
- ♦ Self Assessment
- ♦ VAT Returns
- ♦ Payroll
- ♦ CIS Returns

Tel: Louise Scott (MAAT)
07806 792211

info@jetaccountancy.co.uk

Marham Village Pre-school



We are a small and friendly Pre-school
and place a strong emphasis on

Play With A Purpose

Opening Hours 8.30am til 3pm Daily Term Time

Places Available for children aged
2- 4years

Contact us on 07950753877 or
marhamvillagepreschool@hotmail.com
For more information visit our website



ESTAB-
LISHED 44



We hold a monthly Bingo and all
proceeds made go to the
pre-school. doors open 6.45pm
eyes down 7.30pm
Refreshments available
at Marham Bowls Club

Frustrated by technology?
Confused by the experts?
Problems with your: Computer; Tablet;
Mobile Phone; Broadband; WiFi; Printer;
Digital Camera; Television?

I can help!

ade

Ade Jordan
Friendly Technology Solutions

Based in Wereham, West Norfolk

Fault finding; Repairs; Installations;
Configuration; Training

Tel: 07980 140000

email: help@adejordan.com
www.adejordan.com

No call out charge. No fix, No fee



- Canvas Prints
- House Signs
- Bin Numbers
- Outdoor Signs
- Safety Signs
- Banners
- Roll Up Displays
- Vehicle Graphics
- Stickers
- Dog Tags
- Memorial Plaques
- Business Cards
- Control Panels
- Labels
- Nameplates
- Badges
- Valve Discs
- Brass Plaques

For ALL your LITHO & DIGITAL printing

t 01553 886 123

m 07818 053 129

nathan@v9signsltd.co.uk

www.v9signsltd.co.uk

**Premier
Holiday accommodation
in Wereham
overlooking the pond
4* very comfortable, well
equipped 4 bedroomed house
Sleeps 10, 2 bathrooms**

Ideal if you have family or friends visiting

Good discounts available for
Group 4 News readers!

For more details please Tel Debbie or
Ian Rye on 01366502083, 02476 742077
or 07863 049677 or see website



HOLIDAY COTTAGE

Sleeps 6—8

Perfect for visiting friends & relatives.
Rural location on our farm in Beachamwell.

Contact:

Tom & Caroline Sanderson.
St. John's Farm, Beachamwell, Swaffham, Norfolk
PE37 8BE

Tel: 01366 328244

Fax: 01366 328716

K.J.Catering Services

Contact Steve Bartram on

**01366 727797
or 07542 923909**

kjcatering@btconnect.com

www.catererssuffolkandnorfolk.com

**Outside Catering
And
Hog Roast &
Bar-B-Q
Specialists**

K.J.Bar Services

**Fully Licensed
for all occasions**

K.J Catering is a
family business based on
quality food and service



FREE RANGE # RAREBREED

MADE IN NORFOLK

FREE DELIVERY

SUPPLIED FROZEN

MINIMUM SPEND £20

Remember how pork used to taste when you still had proper crackling? Fancy some handmade sausages with more meat than filling? Love thick cut bacon with the rind on that has been dry cured? All delivered to your door?

Call Rob Simonds on 07940800275 to arrange a delivery.

Traditional & Gluten Free 85% meat sausages £12 for 3 packs of 8 sausages

Dry Cure Smoked & Unsmoked Bacon £6 a pack – approx 500g

Rolled Shoulder of Pork - £10 a joint – approx 1.5 kgs

Pack of 2 pork chops - £5

Available now native breed Wissey Valley Lamb, born and reared here

in The Brecks by Rob of Scotts Field Pork.

Each half lamb box will contain 2x half leg, 2X half shoulder, approx 8 chops and 1kg of mince.

The price is £8/kg, half a lamb will weigh 8-10 kgs.

Whole lamb boxes available at £7.50 /kg

Boxes can be supplied fresh or frozen to your door.

For more details please call Rob on 07940 800275

Your advert could be here.....

Alan Pickering

01366 386125 or 07779 787499

group4news@gmail.com

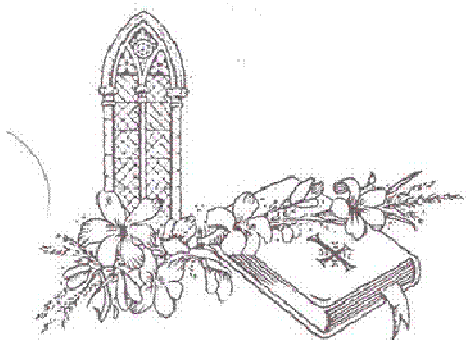


Family Funeral Directors ***R. H. BOND*** ***STOKE FERRY***

Formerly G.P. Riches & Son
Still family owned and now run by the
5th Generation
Est. 1872

Offering a Complete Funeral Service
24 hours a day, to all areas

Salisbury House
Lynn Rd
Stoke Ferry
PE33 9SW
Tel: 01366 500241
Mobile: 07861 671325



Help and
understanding
when you need it
most



A.J. COGGLES

Family Funeral Directors

Family Owned & Managed ~ Established 1851
*A complete caring and personal service offered by a local family business
providing advice and guidance at your time of need when you need it most*

24HR Personal Family Caring Service
Individually Tailored Funerals At A Competitive Price
5TH Generation Independent Family Service
Distance No Object

69 Bridge Street, Downham Market (01366) 384182
1 Blackfriars Street, King's Lynn (01553) 766795
67 Lynn Road Wisbech (01945) 461112



WWW.AJCOGGLES.CO.UK



PR Bowers & Son

Funeral Directors (Est 1921)

Anmer Cottage Methwold Road Northwold IP26 5LN

01366 727432
07796 780270

Private Chapels of Rest ~ 24 Hour Service
Upholding Traditional Family Values Of
Dignity & Respect For Your Loved Ones



Privileged To Serve Families In The Area For 3 Generations

dlux-Hire

For all your private hire requirements

Tel. 01362 652707
Email. richard@dlux-hire.co.uk
Website. www.dlux-hire.co.uk

Travel in style in our Mercedes E-Class, as we seamlessly take you from A to B in comfort.

Our service is designed around your requirements, offering a quality service at a great price.

We are a Mid-Norfolk based company, serving the local area and beyond.



Airports



Weddings



Events



Corporate



Seaports



Hospitals



Andrew Francis Funeral Services

25 London Road, King's Lynn

Tel: 01553 762242

Award Winning Independent Family Funeral Director

Offering you a 24 hour 7 days a week professional personal service

One paid or two planned funerals available



Ethical Mole Management

within 10 miles of PE37 8AZ

Call Geoff on

07597 912389 or 01366 328204

Fully Insured - No mole no fee - Find me online at

www.guildofbritishmolecatchers.co.uk

geoffsiddons1.wixsite.com/norfolk-molecatcher

I have 45 years experience limiting crop damage - call me if you need help

THE NEW BMW 3 SERIES.
RESPONSIVE IN EVERY SENSE.



The Ultimate
Driving Machine



BMW Select Representative example: new BMW 320i M Sport Saloon

Duration	48 months	Total amount payable	£39,531.13
47 monthly payments	£399.00	Total amount payable by customer	£36,108.08
Customer deposit	£3,000.00		
BMW contribution [†]	£3,423.05	Option to purchase fee [^]	£0.00
On the road price	£35,345.00	Contact mileage	32,000 miles
Total amount of credit	£28,921.95	Fixed interest rate	4.9%
Optional final payment	£14,355.08	Representative APR	4.9%

For more information, call us on 01553 692000 or visit www.listerskingslynnbmw.co.uk

Listers King's Lynn

Hardwick Road, King's Lynn, Norfolk PE30 4NA

Fuel economy and CO₂ results for the new BMW 320i M Sport Sedan. Mpg (l/100km): Combined 42.2 (6.7). CO₂ emissions: 129g/km.

Figures are for compilation purposes and may not reflect all life-saving results which depend on a number of factors including the size of the disaster, the post-regulatory, variable measures, timing and speed of implementation. All figures were determined according to the new set of MPTs. The CO₂ figures were estimated back to the beginning of the period and will be subject to subsequent data from registration. City covers full construction and CO₂ from other operations at the same technical standard.

Lenders Kind's Lynn is a credit broker and not a lender.

[illegible]

A meme image featuring a tabby cat wearing glasses and holding a newspaper, with the text "What's the difference between a cat and a comma?" overlaid. The cat is sitting on a striped cushion, looking directly at the camera. The text is in a white, serif font with a black outline, positioned in the upper left corner of the image.

One has claws at the end of its paws,
and one is a pause at the end of a clause.



Jen's Pet Care



Are you at work all day?

Do you need someone to pop in and feed your pet, let it out and keep them company for an hour?

Does your puppy need socialising and some basic training? Maybe you're an older person who needs help exercising and caring for your dog?

Contact Jen at Wretton on 07799 733 463

Pet Sitting - Dog Walking - Home Visits

Livestock Care - Puppy Socialising - Pet Care

30 years experience working with animals

Reasonable Pricing - please ask

www.facebook.com/JensPetCareWretton

Doggie Style Grooming



07 800 800 995

No Cages...No Mess... No Stress!

**Fully Equipped Mobile Salon
Covering a 15 Mile Radius Of
Swaffham**

Qualified & Insured

Please Note: I require space to park and easy access to an electrical point within 25 meters of the parking area. This is essential to carry out the full grooming process.



3 TOWER MEADOWS, SWAFFHAM PE37 7LT

The team at Swaffham are pleased to offer:

- Appointments to suit you
- Cutting edge diagnostics
- Full operating facilities
- Emergency out of hours care at the premises
- Nurse preventative health clinics
- Accessible parking

OPENING HOURS:

Mon-Fri 8.30am - 6.30pm
Sat 9.00am - 12pm

We provide our own out of hours service where you will be seen by one of our vets at the practice in Swaffham please phone the normal practice number in an emergency

Please contact us by phone or email for more information.

Phone: 01760 722054

www.swaffhamvets.co.uk
info@swaffhamvets.co.uk

Like us on Facebook for updates and news



FREELANCE GROOM

- All stable and yard duties undertaken
- Long term, short term or holiday cover
- Trustworthy, experienced, caring and reliable
- British Grooms Association member with Intermediate Certificate
- BHS Stage 1 and RRS
- NVQ Horse and Yard Safety
- Equine Health (Moreton Morrell College)
- References available

Call 07731395142, Facebook or hollyweb92@gmail.com

Tim's Tree Services



All aspects of tree and hedge work undertaken

Hedges Removed

Stump Grinding

Over 30 years experience

Qualified - Insured

Call 01553 813140

or 07867 764307

For your free quote

LOCAL MAN - LOCAL RATES

D.J.B.

LANDSCAPING

: Driveways : Paving : Fencing :

: Garden Clearance :

: Hedge Maintenance :

: Grass Cutting / strimming :

: Concreting :

: Building Repairs/

Maintenance :

All jobs considered

David Bennett

07795 833440

01328 700859



CLAUDIA MORLEY

Garden & Commercial Landscape Designer

City & Guilds - Amenity Horticulture

- Garden Design - over 16 years experience

Full A1 Scale Plans, any size from a small garden to estates & commercial landscape projects.

FREE NO OBLIGATION VISIT & QUOTE

www.fig-forestryandgardendesign.co.uk

01760 338400 / 07824 397727



PETER MORLEY

Landscape Construction,
Planting & Forestry Maintenance.

Fully certified & liability insurances.

30 years experience.

Garden project - fencing
or commercial landscaping.

All forms of forestry & maintenance.

email: pringlepete@gmail.com

07981 419338

www.fig-forestryandgardendesign.co.uk

ADE HARDY GARDENING SERVICES



**For all your
gardening needs**

Garden Clearances
Mowing and Strimming
Hedge Cutting
Tree Work
Fencing
Winter tidy ups
General Garden Maintenance

**To discuss your requirements
call Ade on 07798 785663**



**No job too large or too small to be
considered**

Turn To Ted

**Friendly, Hardworking,
Handyman, Gardener,
DIY**

**£15 per hour,
1hour min**

**No job too Small or
Large**

**Telephone
07967 796992**



**07552
450522**

anglialandscapes@btopenworld.com

Turf Suppliers

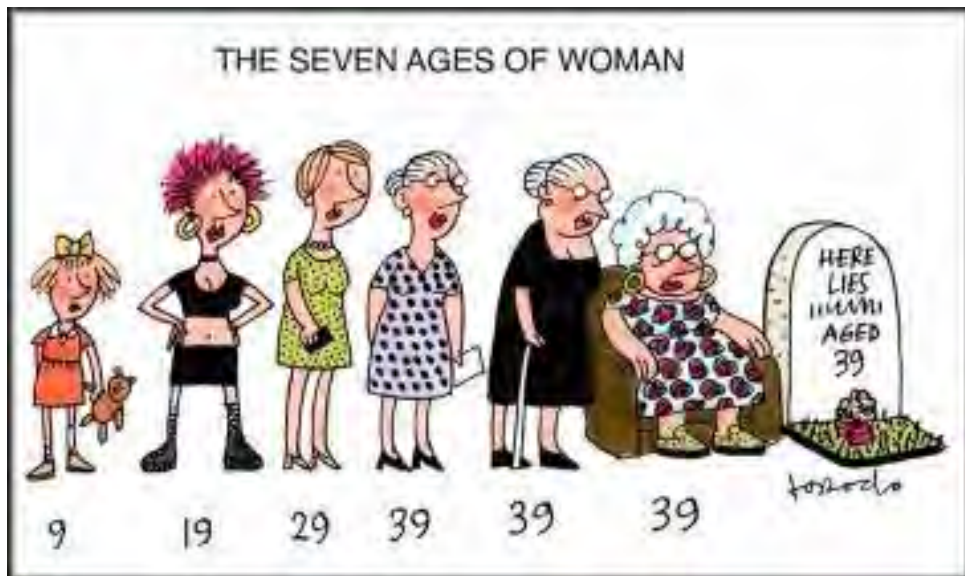
Domestic/Commercial Mowing & Hedge Cutting

Hedgerow and Tree Planting

Driveways and Patios

Fencing

01366 500803



Volunteers **Home Start** Needed! support and friendship for families

**Do you remember those early years?.....
Sleepless nights, tantrums & teething.**

If you have parenting experience Home-Start Swaffham & District would love to hear from you. We have families waiting for support and all we ask is for a couple of hours a week commitment. We offer a prep course accredited through the Open College Network which takes place one day a week for 10 weeks. Term time 10am-2pm.

So, if you think you can make a difference to a family needing a little help call us today to find out more.

Volunteers will be subject to an enhanced CRB check. We are also looking for trustees, for more info contact us on:

Home-Start Swaffham & District
The Community Centre, Camplinglands,
Swaffham, PE37 7RB
Tel: 01760 721271
Email: admin@homestartswaffham.org.uk

BEAUTIFUL BEGINNINGS

Nails and Beauty by Holly

"The salon experience in the comfort
of your own home"

Get colour– NexGen acrylic tip and
dip-Eyebrow tint-Eyelash tint- Lash lift
– Ear candling

FB: Beautiful Beginnings

Phone or WhatsApp Holly
on 07731 395142

beautifulbeginningsbeauty@gmail.com

Fully insured Member of the Guild of
Beauty Therapists

Yoga with Julia Wynne

BWY Dip., AYS Therapeutic Practitioner Cert.

High quality yoga classes based on traditional methods & teachings from an experienced & highly qualified teacher.



If you want to experience or improve any of these: *Relaxation, Concentration, Strength, Flexibility, Balance, Breathing.....* then this is for you!

Tuesdays in Beachamwell Village Hall (PE37 8BB) from 10.00am to 11.45am email: julia.juliannewynne2@gmail.com Tel: 01366 328617

Individual tuition based on your own abilities & needs also available on request. This will take place in my private studio

Charlotte Rose LicAc

Acupuncture
Acupuncture for Pain
Facial Acupuncture
Reflexology
Aromatherapy Massage
Cupping Therapy

Over 10 years experience as a therapist. Fully insured with Balens.

Clinics in Stoke Ferry - Castle Acre

Gift Vouchers Available

Contact: Charlotte: 07855513199 / 01366 501232

charlotterose.charlotterose@gmail.com
www.charlotte-acupuncture.co.uk

YOGA

All abilities welcome

Stretching, postures and breathing help to improve mobility and strength.

Please wear loose clothing and bring a warm rug and/or yoga mat (there will be a few mats available for loan/buy).

British Wheel of
Yoga Tutor,
Ann Lewing
Contact number:
01366 328350

STOKE
FERRY
VILLAGE
HALL

Mondays
7.00pm—8.30pm
Please arrive no
later than 6.55pm

£5.00 per session
(pay as you go)
Under 18 yrs old must
be accompanied by an
adult

NO MEAN FEET

FOOT CARE IN THE COMFORT OF YOUR OWN HOME

YOUR LOCAL CARE SPECIALIST



- ✓ NAIL CUTTING
- ✓ CORNS
- ✓ CALLUS
- ✓ DRY SKIN
- ✓ INFECTION
- ✓ VERRUCAE
- ✓ CRACKED HEELS



for the best feet in the street

CALL STEVE ON 07837 506 906

STEVE JONES MBE, SACDip FHP(Adv) , Dip C Tec, Dip Bmec, Dip RM
Fellow of The Alliance of Private Sector Practitioners
Member, Accredited Register of Foot Health Practitioners

NO MEAN FEET

CARE IN THE COMFORT OF YOUR OWN HOME

YOUR LOCAL CARE SPECIALIST



✓ REMEDIAL MASSAGE

✓ THERAPEUTIC MASSAGE

✓ SPORTS INJURY

✓ BIO MECHANICAL
& GAIT ANALYSIS

✓ THERAPY FOR PAIN IN LOWER
BACK, LEG JOINTS & MUSCLES

✓ LYMPHATIC DRAINAGE

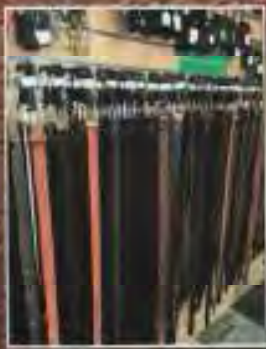
CALL STEVE ON 07837 506 906

STEVE JONES MBE, SACDip FHP(Adv) , Dip C Tec, Dip Bmec, Dip RM
Fellow of The Alliance of Private Sector Practitioners
Member, Accredited Register of Foot Health Practitioners

Welcome to our store in Hunstanton

**THE
LEATHER
SHOP**

QUALITY AT A FAIR PRICE



Unit 1 Harlequin House (corner of main car park)

Le Strange Terrace PE36 5AJ

Tel: 01485 535486

www.edwardsleathercraft.co.uk

MOBILE FOOTHEALTH PRACTITIONER

Peter Stanley MCFHP MAFHP

Fully insured

Home visit only

Registered Professional

FHP



FOOT PRINCE

For all enquiries or to book an appointment please call or leave a message.

01366 380793 or 07842553554

Treatments include; Nail trimming/reduction (thickened nails), corn removal, callus reduction, athletes foot treatment/advice, verruca treatment/advice, custom made orthotics (minimal) cracked heels, neurovascular assessments and diabetic footcare and advice.



R D VOUTT & SON

PLASTERING

All aspects of plastering & floor screeding

Contact Bob on 01366 328 545

mobile 07799514635

rdvoutt@yahoo.co.uk

RETIRED ELECTRICIAN

Available for small works
Phone John on 01366 501327
or 07889187820



**WARNE
ELECTRICAL**

RAY GRIBBLE

Antique Restoration & Traditional Upholstery

All aspects of antique furniture restoration, including French polishing, cabinet repairs and traditional upholstery

Traditional Upholstered Furniture

Footstools, Sofas and Chairs
made to commission

Picture Framing & Mirrors

www.raygribble.co.uk

Contact
ray@raygribble.co.uk
or phone
01366 500387

Vine House, Church Road, Wereham

D W SAVAGE

"CARPENTER/BUILDER"

25 Years Experience

For all your building requirements

EXTENSIONS

*Kitchens, Bathrooms supplied and
Fitted or just labour*

*Conservatory, fascias, guttering
Laminate or Oak flooring
Patios, Decking etc.*

*Car Ports
All roof systems*

Renovations

Ask for Darryl
Telephone 01366 501152
Mobile 07884 373315

Richard Pooley

Cabinet Maker

The Complete
Kitchen Design &
Installation Service

All Aspects of
Carpentry & Joinery

Bespoke Furniture

Wall & Floor Tiling

Tel: 01366 728791 - 07920 117784
Email: richypooley@gmail.com

newrooms

kitchens bedrooms bathrooms

KITCHENS

BEDROOMS

BATHROOMS

FLOORING

Our showroom is located on the
Brandon Road, Methwold, IP26 4RH

01366 727417

newroomsdesign.co.uk

Follow us on



facebook



twitter



Instagram



Pinterest



DAVID THOMPSON MASTER CHIMNEY SWEEP

All chimneys, flues & appliances swept

Brush and vacuum used

CCTV Chimney surveys

**Bird/rain guards, vent caps
and cowls supplied and fitted**

NVQ qualified chimney engineer

Certificates Issued

01328 851081

www.the-sweep.co.uk

D. Thompson Chimneys Ltd



FOREST & FEN CHIMNEY SWEEP



City & Guilds
ACCREDITED

Experienced, Qualified Professional

07749 257770 or 01366 727537

forestfensweep@aol.com

All appliances swept. Fully insured & certificates issued.

WJA TILING

The Complete Wall and Floor Service

Ceramics, Porcelain, Mosaic
and Natural Stone
Under floor heating and Karndean

No job too big or small
All Work Guaranteed
15 years experience

For a free quote, measure up
or advice
Phone Will on: 07884 446257

PAUL FARRAR GENERAL PLUMBING SERVICES

ALL ASPECTS OF
PLUMBING UNDERTAKEN,
INCLUDING MAINTENANCE
AND REPAIRS
AT COMPETITIVE PRICES

**PHONE 01366 328072
OR 07725 300624**

BRYAN CATER



Chimney Sweep

Guild of Master Sweeps certified
Clean and Reliable
Certificates Issued
Fully Insured
Fire Parts Supplied and Fitted

**Call Gavin on
01366 728342**

The Poplars, Thetford Rd,
Northwold, Thetford, Norfolk



GOT DIRTY WINDOWS? G.COSTIN WINDOW CLEANING

Windows, doors, frames &
sills cleaned as standard.

Gutters, fascias,
conservatories & Reach &
Wash
Pure Water System.

Reliable & friendly service.

Other cleaning services now available.

Call Gavin 07796 606607

gcostinwindowcleaning@yahoo.co.uk

M.B. Roofing

**Complete Re-Roof
UPVC Facias
Leadwork
Guttering
Repairs
Re-Pointing
Bird Proofing
Roof Cleaning
Chimney Rebuild
Dry Verge System**



01760 725047

07979 811260



mb-roofing.co.uk



Geoff Dixon

The professional alternative to doing it yourself

Geoff Dixon Carpentry, Joinery and Handyman Services, Beachamwell

Over 45 years experience in this industry. I have experience and am happy to carry out jobs such as; fascia and guttering repairs or cleaning; external fence panelling repairs, replacement/ treatments; gates made; doors and locks repairing and replacing; refitting and refurbishment of kitchen cupboards; shelving; and general maintenance jobs around the house.

No job is too small, if there's something you'd like doing that I haven't listed,
Please get in touch and ask.

Telephone: 01366 659828 Mobile: 07726 584502

Email: geoff@norfolkshandyman.co.uk

Web site: www.norfolkshandyman.co.uk

Jake Stansfield Ltd

Plumbing & Heating

All aspects of Plumbing & Heating to the highest standard.

Gas Safe registered.

Contact 07780463787 or

01366 500469

jakestansfield@live.com



Paul Braybrooke



Oil Fired Boiler Engineer

Boiler Servicing

Breakdown Service

Commissions

Phone 01353 777788

Tank Replacements

07946 735691



P.G.M.S.

**Fabrication of a
variety of metals
Mechanical engineering**

Sparex *Agricultural
spares & accessories*

Peter Garner

Mechanical Services

Shingham Lane, Beachamwell,
Swaffham, Norfolk. PE37 8AY.

Tel: 01366 328823

E-mail: pgms@lineone.net

SPECIAL EVENT PLANNED?



Think Wereham Village Hall!!

Beautiful facilities:

full catering kitchen, 3 separate
rooms available for hire (main hall,
community room and meeting room).

Visit www.werehamvillagehall.co.uk

or call Lyn, Sara or Sue on

07497 430005 to find out more.

Peckhams Plumbing

**John Peckham Friendly local
Plumbing and heating
engineer**



**All Work
Undertaken
Big Or Small**

**Fully Qualified
and
Insured**

**No Estimates
Just 1 Price**



**No Call
Out Fees**

- ✓ Full Heating Systems
- ✓ Heating system updates
- ✓ Radiator changes
- ✓ Oil Tank changes
- ✓ Fully Fitted Bathrooms
- ✓ Leaks And Repairs
- ✓ Tiling
- ✓ Boiler replacements & repairs
- ✓ Boiler Services

Tel: 07534892411

Taylor's Solid Fuels **Family run since 1946**

Regular fortnightly Solid Fuel deliveries in your area. Competitive prices and a full range of products.

"Don't Shiver We Deliver"

Quality top soils and aggregates. Bulk bags and Tipper loads from 1- 20 tonnes

Tel: 01842890568 or see us on
www.taylorssolidfuels.co.uk



NW
NORFOLK WOODBURNERS

SUPPLY & INSTALLATION OF WOODBURNERS

Norfolk's agent for Aga, Hunter & Parkray Stoves

AGA
HUNTER
PARKRAY

01328 700161

www.norfolkwoodburners.co.uk

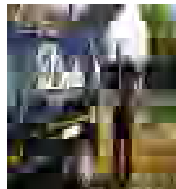
M J DENT HEATING SERVICES LTD

OIL AND GAS HEATING ENGINEER

SERVICING, MAINTENANCE, BREAKDOWNS, LANDLORD CERTIFICATES,

Why have your boiler serviced?

The importance of **having your boiler serviced**. Having a reliable and dependable boiler to provide hot water and heat is a daily essential. ... An annual boiler service can prevent potential problems, avoid unwanted disruption, ensure maximum central heating efficiency and keep energy costs to a minimum.



Call on

01366 387595

01366 383661

07957357480

Check us out on

checkatrade.com



Your local plumbing and heating specialist

Our fully qualified plumbing and heating engineers cover the following:

- ☑ Boiler Servicing
- ☑ Boiler Repairs
- ☑ Boiler Replacement
- ☑ Boiler Installation
- ☑ All Plumbing and Central Heating Work

Finance
options
available on
boiler
installations



Eastern Gas are one of West Norfolk's top plumbing and heating companies working with gas, oil and LPG systems.



T: 01553 750060 | M: 07940367529

E: admin@easterngasltd.co.uk

W: easterngasltd.co.uk

Traditional Values ...



Life has changed so much since this photograph was taken...

But the traditional values of honesty, integrity and service associated with the time are an essential part of our business.

So if you are thinking of buying, selling, letting or renting and seek the reassurance of an Agent practicing these traditional values, yet with a modern approach, please call us on 01366 388991

Ashton Roberts

Letting Agents • Estate Agents

19a High Street, Downham Market, Norfolk, PE38 9DA
info@ashtonroberts.co.uk www.ashtonroberts.co.uk



**Saint John's Way
Saint John's Business Estate
Downham Market
Norfolk
PE38 0QQ**

Easy access, ample on-site parking, dedicated sterile operating theatre, dedicated dental suite, separate dog and cat wards, isolation ward, all staff and facilities on one site, x-ray suite, in-house laboratory, ultrasound facilities, Pet Passport, export services and 24 hour nursing cover.

Many practices now use other veterinary surgeries for their out of hours work. This means that you will have to travel to an unfamiliar practice which is likely to be much further away. Despite being only a two vet. practice we continue to do all of our own on call cover. The phones are diverted directly to the vet on call as we know that clients appreciate a familiar voice at the end of the phone, 24 hours a day, who knows their pets and, if treatment is necessary, then they prefer to travel to their own practice to be seen. This is part of our Professional and Personal service that our existing clients are accustomed to and we warmly welcome new clients who wish to register with us.

Our surgery times are listed below. Please note that appointments are now necessary for all evening surgeries.

Open surgeries: Monday to Friday , 9-10am, Saturday 10-11.30am

**All other consultations will be by appointment only
so please ring in advance**

info@crossingsvets.co.uk

01366 382219

www.crossingsvets.co.uk